

Updated: September 30, 2024

# Language Assistance Plan

---

# Table of Contents

Background .....	1
Language Assistance Requirements.....	2
Four-Factor Analysis .....	4
Factor 1: Assessment of the Number and Proportion of LEP Persons Likely to be Served or Encountered in the Eligible Service Population.....	4
Number and Proportion of LEP Persons in the State of Virginia .....	4
Number and Proportion of LEP Population by County.....	7
Factor 2: Assessment of Frequency with Which LEP Individuals Come Into Contact with the Transit Services or System.....	7
Factor 3: Assessment of the Nature and Importance of the Transit Services to the LEP Population.....	10
Factor 4: Assessment of the Resources Available to the Agency and Costs .....	11
DRPT’s LEP Implementation Plan.....	12
Providing Notice to LEP Persons.....	12
Oral Language Assistance.....	13
Written Language Assistance.....	13
Vital Documents .....	13
DRPT Staff Training.....	14
Monitoring and Updating the LEP Plan.....	14
Summary Of Plan .....	15
Appendix A: LEP Population per Jurisdiction.....	16
Appendix B: Public Sign-In Sheet/Survey.....	83

# Background

As the recipient of Federal funds from the U.S. Department of Transportation (DOT), the Virginia Department of Rail and Public Transportation (DRPT) is required to comply with Title VI of the Civil Rights Act of 1964.

This section includes the Language Assistance Plan (LAP) for persons with Limited English Proficiency (LEP) for DRPT's Title VI Plan. It documents the four-factor analysis that includes the identification of individuals served by DRPT who need language assistance, the nature and importance of DRPT services to LEP individuals and available resources and costs to provide language assistance services. It also includes DRPT's LAP which is composed of descriptions of language assistance measures employed by DRPT and the status of current and future efforts to implement the LAP.

The DRPT LAP conforms to Executive Order #13166, Improving Access to Services for Persons with Limited English Proficiency (August 11, 2000) and follows the U.S. DOT Guidance implementing the Executive Order, Policy Guidance Concerning Recipients' Responsibility to Limited English Proficient (LEP) Persons (Dec 14, 2005)(70 Fed Reg 74087).

---

# Language Assistance Requirements

All recipients of U.S. DOT funding are required to take reasonable steps to ensure meaningful access to their programs and activities by LEP persons. All recipients must comply with Executive Order #13166, *Improving Access to Services for Persons with Limited English Proficiency (August 11, 2000)* and the U.S. DOT Guidance implementing the Executive Order, *Policy Guidance Concerning Recipients' Responsibility to Limited English Proficient (LEP) Persons (Dec 14, 2005)(70 Fed Reg 74087)*. These require that, when receiving Federal funds, recipients are expected to conduct a four-factor analysis to prevent discrimination based on race, color, and national origin and take steps to ensure LEP persons are provided meaningful access.

The guidance applies to all U.S. DOT funding recipients, which include state departments of transportation, state motor vehicle administrations, airport operators, metropolitan planning organizations, and regional, state, and local transit operators, among many others. Coverage extends to a recipient's entire program or activity, i.e., to all parts of a recipient's operations. This is true even if only one part of the recipients receives Federal assistance. For example, if the U.S. DOT provides assistance to a state department of transportation to rehabilitate a particular highway on the National Highway System, all operations of the entire state department of transportation—not just the particular highway program or project—are covered by the U.S. DOT guidance.

Among other requirements outlined in the *FTA C.4702.1B – Title VI Requirements and Guidelines for Federal Transit Administration Recipients*, DRPT is responsible for providing meaningful access to LEP Persons to comply with FTA requirements. The steps in this meaningful access are three-fold:

1. Conduct a four-factor analysis to determine the specific language services that are appropriate to provide.
2. Determine written translations needed under the "Safe Harbor Provision" which outlines both which written materials are vital documents – and thus need written translations – and which languages they need to be translated into.
3. Develop an LAP and identify which language assistance services are appropriate.

The U.S. DOT guidance outlines four factors that recipients should apply to the various kinds of contacts they have with the public to assess language needs and decide what reasonable steps they should take to ensure meaningful access for LEP persons (referred to as the "four-factor analysis"):

1. The number or proportion of LEP persons eligible to be served or likely to be encountered by a program, activity, or service of the recipient or grantee.
2. The frequency with which LEP individuals come in contact with the program.
3. The nature and importance of the program, activity, or service provided by the recipient to people's lives.
4. The resources available to the recipient and costs.

The greater the number or proportion of eligible LEP persons, the greater the frequency with which they have contact with a program, activity, or service, and the greater the importance of that program, activity, or service, the more likely enhanced language services will be needed. Smaller recipients with more limited budgets are typically not expected to provide the same level

of language service as larger recipients with larger budgets. The intent of the U.S. DOT's guidance is to suggest a balance that ensures meaningful access by LEP persons to critical services while not imposing undue burdens on small organizations and local governments.

After completing the above four-factor analysis, recipients can determine which LEP services are appropriate. Recipients have two main ways to provide language services: oral interpretation (in person or via telephone interpretation service) and written translation. The correct array of services should be based on what is deemed both necessary and reasonable in the four-factor analysis. The languages spoken by LEP individuals with whom the recipient has frequent contact often determine the languages into which documents will be translated and the types of interpretation provided.

# Four-Factor Analysis

This section includes the results of the four-factor analysis (including the Safe Harbor Provision) performed to identify LEP populations for whom DRPT should be providing language assistance services. The results of the four-factor analysis were used to develop the DRPT LAP.

## Factor 1: Assessment of the Number and Proportion of LEP Persons Likely to be Served or Encountered in the Eligible Service Population

This factor considers the number and proportion of persons with limited English proficiency on both a statewide and city/county basis from each language group. Statewide data was extracted from the 2022-2026 U.S American Community Survey (ACS) 5-year estimates. The 2022-2026 estimates did not provide detailed LEP data was not available at the city/county level, so the most recent detailed dataset from the 2022-2026 ACS 5-year estimates was used for local analysis. The language data for the state is presented first along with a review of languages spoken in each city/county.

The language data presented for this analysis is used to determine which languages DRPT will translate written materials into under the DOJ’s Safe Harbor Provision (Safe Harbor stipulates that DRPT provide written translation of vital documents for each eligible LEP language group that constitutes five percent (5%) or 1,000 persons, whichever is less).

## Number and Proportion of LEP Persons in the State of Virginia

The U.S. Census Bureau has a range of two classifications of how well people speak English. The classifications are (1) “very well,” and (2) “less than very well”. For planning purposes, DRPT considers individuals who speak English “less than very well” as having Limited English Proficiency or LEP.

The ACS 2022-2026 data indicates that in the State of Virginia 1,355,058 people over the age of 5, or 16.67 percent of that population, speak a language other than English at home, as displayed in Table 1. 823,987 individuals representing 10.13 percent of the overall population speak English less than “very well” and are considered to have limited English proficiency (LEP).

Table 1. Virginia’s Language Use and English-Speaking Ability for the Population Five Years and Older.

Total Population (5+ Years)	Speak Only English		Speak Other than English		Speak English "Very Well"		Speak English less than "Very Well"	
	Count	Percent	Count	Percent	County	Percent	Count	Percent
8,130,363	6,775,305	83.33%	1,355,058	16.67%	531,071	6.53%	823,987	10.13%

Other than English, Spanish is the most widely spoken language in Virginia, and the Spanish-speaking LEP population accounts for just under half (44.7%) of the total LEP in the state. The Spanish-speaking LEP population also makes up 7.45% of the entire population of Virginia. Spanish speakers are the most important community for DRPT to focus on in their plan. Other groups that make up a significant portion of Virginia’s LEP population are individuals who speak Arabic, Korean, Chinese (incl. Mandarin, Cantonese), and Vietnamese. Language assistance should be provided as needed in jurisdictions with a significant population of LEP speakers of different languages. Table 2 displays the amount of LEP individuals ages 5 and over by language spoken at home.

**Table 2. Amount of LEP Individuals for Language Spoken at Home in Virginia.**

Commonwealth of Virginia			
Language	Number of LEP Individuals (5+)	Percent of State Population	Percent of LEP Population
Spanish	605,710	7.45%	44.70%
French (incl. Cajun)	33,822	0.42%	2.50%
Haitian	6,411	0.08%	0.47%
Italian	8,893	0.11%	0.66%
Portuguese	12,658	0.16%	0.93%
German	24,049	0.30%	1.77%
Yiddish, Pennsylvania Dutch or other West Germanic languages	4,638	0.06%	0.34%
Greek	6,378	0.08%	0.47%
Russian	16,142	0.20%	1.19%
Polish	3,830	0.05%	0.28%
Serbo-Croatian	4,038	0.05%	0.30%
Ukrainian or other Slavic languages	5,760	0.07%	0.43%
Armenian	2,140	0.03%	0.16%
Persian	33,224	0.41%	2.45%
Gujarati	9,164	0.11%	0.68%
Hindi	31,033	0.38%	2.29%
Urdu	33,407	0.41%	2.47%
Punjabi	8,111	0.10%	0.60%
Bengali	16,412	0.20%	1.21%
Nepali, Marathi, or other Indic languages	19,568	0.24%	1.44%
Other Indo-European languages	18,216	0.22%	1.34%

<b>Telugu</b>	26,333	0.32%	1.94%
<b>Tamil</b>	11,990	0.15%	0.88%
<b>Malayalam, Kannada, or other Dravidian languages</b>	7,926	0.10%	0.58%
<b>Chinese (incl. Mandarin, Cantonese)</b>	58,872	0.72%	4.34%
<b>Japanese</b>	10,004	0.12%	0.74%
<b>Korean</b>	56,747	0.70%	4.19%
<b>Hmong</b>	175	0.00%	0.01%
<b>Vietnamese</b>	52,098	0.64%	3.84%
<b>Khmer</b>	5,520	0.07%	0.41%
<b>Thai, Lao, or other Tai-Kadai languages</b>	9,925	0.12%	0.73%
<b>Other languages of Asia</b>	15,151	0.19%	1.12%
<b>Tagalog</b>	47,045	0.58%	3.47%
<b>Ilocano, Samoan, Hawaiian, or other Austronesian languages</b>	6,684	0.08%	0.49%
<b>Arabic</b>	59,293	0.73%	4.38%
<b>Hebrew</b>	1,971	0.02%	0.15%
<b>Amharic, Somali, or other Afro-Asiatic languages</b>	40,652	0.50%	3.00%
<b>Yoruba, Twi, Igbo, or other languages of Western Africa</b>	24,500	0.30%	1.81%
<b>Swahili or other languages of Central, Eastern, and Southern Africa</b>	7,458	0.09%	0.55%
<b>Navajo</b>	88	0.00%	0.01%
<b>Other Native languages of North America</b>	745	0.01%	0.05%
<b>Other and unspecified languages</b>	8,277	0.10%	0.61%
<b>Total LEP Population</b>	1,355,058	16.67%	
<b>Total Population</b>	8,130,363		

Source: U.S. Census Bureau, American Community Survey 2022-2026 (Table: B16001)

Languages in **bold** exceed the Safe Harbor threshold - 39 specific languages with LEP population > 1,000, plus Spanish, Arabic, Chinese, Korean, Vietnamese, Tagalog, Amharic, French, Urdu, Persian, Hindi, Telugu, Yoruba, German, Nepali, Other Indo-European, Bengali, Russian, other languages of Asia, Portuguese, Tamil, Japanese, Thai, Gujarati, Italian, Punjabi, Malayalam, Swahili, Ilocano, Haitian, Greek, Ukrainian, Khmer, Yiddish, Serbo-Croatian, Polish, Armenian, Hebrew

## Number and Proportion of LEP Population by County

The number and proportion of the population with LEP vary greatly among the cities/counties in the state, with the more urban counties having both the greatest percentage of their population and the absolute number of persons considered as LEP.

Appendix A shows the distribution of LEP individuals by language spoken at home in Virginia's counties and independent cities. The Safe Harbor Provision was created to guide a transportation organization's decision to provide written translations of vital documents in a service area. LEP language groups with more than 1,000 individuals or representing over 5% of a jurisdiction's population should have access to written translations of important documents under the Safe Harbor Provision. A review of the ACS 5 year estimates from 2022-2026, the most recent detailed LEP dataset at the city/county level, in each Virginia jurisdiction revealed that 27 counties and 25 cities, were beyond the Safe Harbor provision for at least one language group. Spanish was the most common language to exceed the Safe Harbor Provision.

For each program, project, service, or activity, the data in this plan will be used to help identify the number of LEP, minority, and low-income populations by county and city within the Commonwealth to ensure meaningful public involvement. DRPT's Public Participation Plan will be followed to ensure all groups have notification and access.

## Factor 2: Assessment of Frequency with Which LEP Individuals Come Into Contact with the Transit Services or System

Each DRPT and subrecipient program/project must be evaluated in relationship to the number of persons who are within the program/project area and the number of times they have frequented the program or activity. For public hearings/meetings, a sign-in sheet or survey is to be utilized to determine the demographic and frequency of participation (see Appendix B).

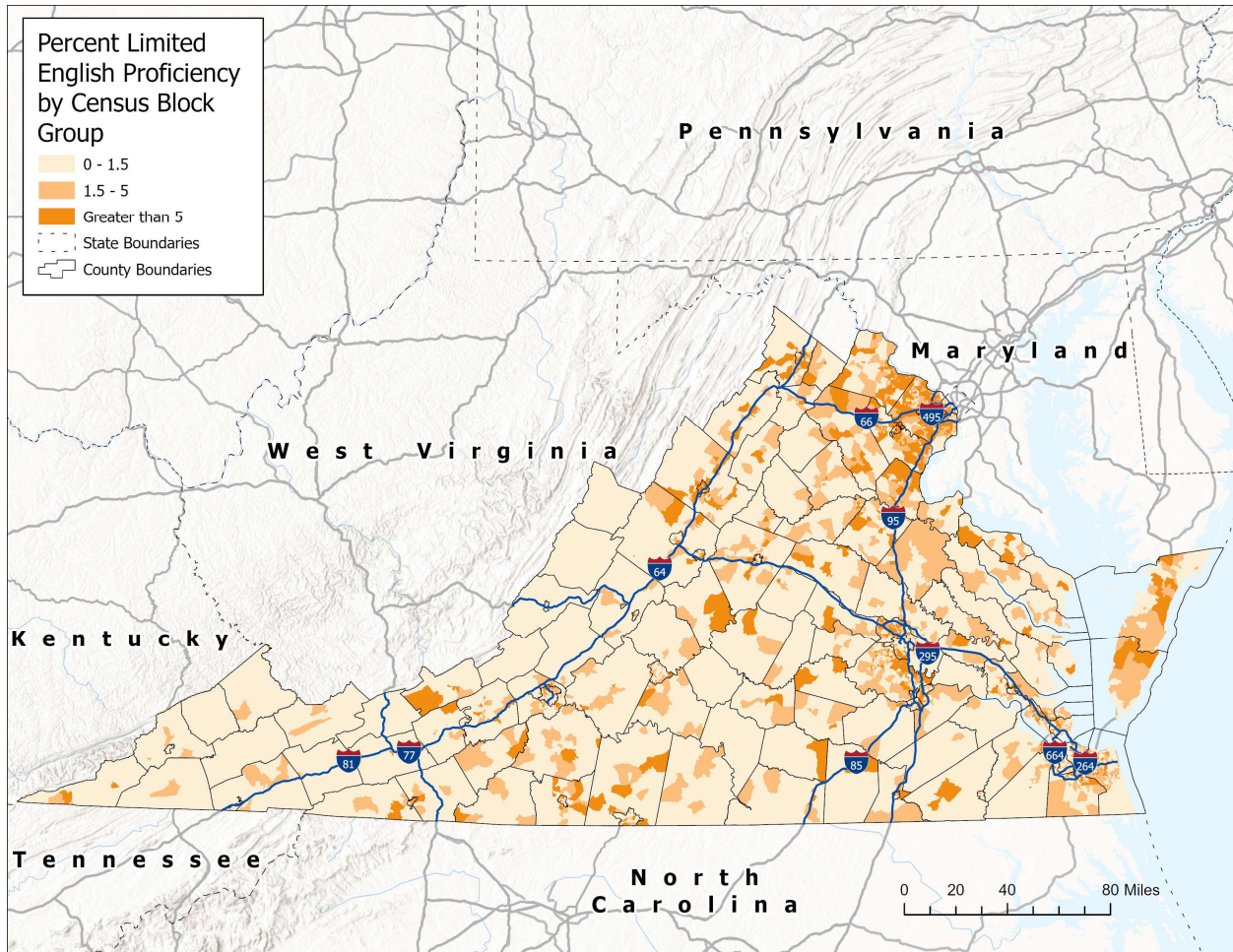
In November 2017, DRPT partnered with Dillon's Bus Service to operate the Virginia Breeze, an intercity bus route that travels daily to and from Blacksburg and Washington, DC. In 2019, the Virginia Breeze introduced two new routes, one connecting Danville to Washington DC and another connecting Martinsville to Richmond. The bus has stops in large LEP populations in Harrisonburg, Fairfax County, Arlington County, Richmond, Roanoke, Martinsville and Charlottesville. Due to its proximity to these locations, DRPT will likely have significant LEP ridership on these routes.

Figure 1 shows a map of the Virginia Breeze Route and its 10 and 25 mile service radii with the percentage of LEP people living at each Census block group. The highest concentration of LEP individuals are in Northern Virginia, with significant LEP populations in Harrisonburg, Blacksburg, Charlottesville, Martinsville, Roanoke and Richmond as well. Figure 2 shows the same data, but for the whole State of Virginia.

DRPT will regularly conduct a survey to get a better idea on the demographics of ridership on the Virginia Breeze.



Figure 2. LEP Population by Census Block Group Across Virginia



The Virginia Breeze is not the only arena where LEP people will come into contact with DRPT. Programs, services, and activities that have potential impact for LEP persons include, but are not limited to:

- Public involvement and public engagement meetings/hearings for projects affecting LEP communities or individuals
- Transit subrecipients
- Internet access (DRPT website must be accessible to LEP persons)
- Virginia Breeze bus stops and bus schedules
- Office visits to DRPT

At present, DRPT has only received a few requests for translation of documents into Spanish.

### **Factor 3: Assessment of the Nature and Importance of the Transit Services to the LEP Population**

As the state public transportation agency responsible for coordinating the Statewide Public Transportation Planning process, DRPT must make sure that all segments of the population, including LEP persons, have been involved, or have had the opportunity to be involved, with the planning process. The impact of proposed transportation investments on underserved and underrepresented population groups are part of the evaluation process. DRPT provides oversight and helps ensure that LEP and other protected classes of persons are not overlooked in the transportation planning process.

Along with the operation of the intercity bus system, DRPT's main function is to support cooperative, comprehensive, and continuing public transportation planning and services as outlined in federal transportation acts. In doing so, DRPT develops the Six-Year Improvement Program (SYIP), the Statewide Transportation Improvement Plan (STIP), Public Transportation and Transportation Demand Management grant program application guidance, and as needed, other studies. Another key function is oversight of their subrecipients.

The SYIP is a plan that allocates funding for public transportation facilities and commuter and public transportation programs intended to be implemented through a combination of federal, state, and local funding.

The Public Transportation and Transportation Demand Management grant program application guidance provides application guidance regarding the various federal and state public transportation grant programs administered by DRPT. The document contains two major parts:

1. An overview of the grant programs administered by DRPT, a description of DRPT's public transportation investment policy, and a calendar describing each step in the grant application process.
2. A description of each grant program including eligible recipients and expenses, match ratios, application evaluation criteria, and the application procedure.

DRPT is required by the FTA to ensure that recipients of FTA assistance comply with federal requirements. To meet this federal mandate, DRPT conducts periodic reviews of its grantees. Additional objectives of the reviews are to ensure compliance with state requirements, encourage progress, and identify training and technical assistance needs.

DRPT's most critical services are those related to funding public transportation, public involvement (public information or planning meetings), and the ability to file complaints. LEP persons, low-income populations, minority populations, the elderly, and the disabled must be considered in these processes. The operation of the Virginia Breeze provides an important intercity link for the LEP populations living in both Northern Virginia and the New River Valley. In order to provide greater access to public involvement to these groups, DRPT will continue communicating with community organizations that serve LEP persons when performing work in these areas.

## **Factor 4: Assessment of the Resources Available to the Agency and Costs**

This last step of the four-factor analysis allows DRPT to weigh the demand for language assistance against current and projected financial and personnel resources. This analysis helps determine if the language services currently provided are cost effective and helps to plan future investments, so that the most needed assistance is provided to the greatest number of LEP persons within the limits of DRPT's resources.

DRPT serves the entire Commonwealth of Virginia and is required by federal law to provide access to LEP persons, and to ensure that its subrecipients also provide access. Even subrecipients with very limited resources should have an LEP section in their Title VI Plan with the acknowledgment that demographics change yearly and indicate the number of LEP persons may increase within their specific planning area.

According to U.S. DOT Policy Guidance Concerning Recipients' Responsibilities to Limited English Proficient (LEP) Persons published in the Federal Register December 14, 2005 (Volume 70, Number 239),

"Certain U.S. DOT recipients, such as those serving very few LEP persons or those with very limited resources, may choose not to develop a written LEP Plan."

Costs must be factored into this balancing test as part of the consideration of "resources available." Reasonable steps may cease to be reasonable when the costs imposed substantially exceed the benefits in light of the factors outlined in the U.S. DOT LEP Guidance. In this case, the needs have been prioritized so that language services are targeted where most needed because of the nature and importance of the activity involved. However, LEP persons have the right to receive language assistance at no cost to them.

To date, DRPT and its subrecipients have expended considerable funds on language services. Language assistance actions include:

- MPO and local subrecipients have created their own LEP/LAP plans with assistance from DRPT
- Google Translate on DRPT's and the VA Breeze websites for translation of vital documents
- Translation of vital documents upon request
- Training
- DRPT's language service contractor

# DRPT's LEP Implementation Plan

Considering DRPT's size and scope, LEP individuals in DRPT's statewide service area, and financial resources, it is necessary to provide at least the most basic and cost-effective services available to ensure compliance with Executive Order 13166. Many options were discussed and considered by DRPT staff and the following recommendations were adopted as measures to provide meaningful access to limited English speaking persons:

- Publish the LEP Plan and vital document materials on the DRPT website in languages other than English, as necessary.
- Disseminate the LEP Plan to community organizations, governmental entities, and other interested persons, in languages other than English, as requested.
- With advance notice of seven calendar days, provide interpreter services at any public hearing or meeting. This will include foreign language and interpreter services for the hearing impaired.
- Translate vital documents into Spanish and other languages as requested.
- Provide training to Virginia Breeze staff on how to effectively communicate with LEP persons.
- Place notices of DRPT's non-discrimination policies and information on the local and federal complaint process on the website in English and other languages via Google Translate and make the notices available at public hearings/meetings.
- Translate vital documents in languages other than English according to the Safe Harbor Provision.
- Provide training to DRPT staff that is involved in customer service, public outreach, and public involvement, on identifying LEP populations and providing LEP translation and interpretation on the requirements for providing meaningful access to services for LEP persons.
- Monitor subrecipients to ensure LEP requirements are fulfilled.
- Include in DRPT's Public Participation Plan (PPP) statements and notices that interpreters will be provided, upon prior request for language assistance as well as for sign language

## Providing Notice to LEP Persons

U.S. DOT LEP guidance says:

"Once an agency has decided, based on the four factors, that it will provide language service, it is important that the recipient notify LEP persons of services available free of charge. Recipients should provide this notice in languages LEP persons would understand."

DRPT will provide statements in public notices, as outlined in the Public Participation Plan, that persons requiring language or special assistance will be accommodated, with reasonable advance notice to DRPT.

Federal fund recipients have two main ways to provide language services: oral language assistance, either in person or via telephone interpretation service and, written language assistance. The correct mix should be based on what is both necessary and reasonable in light of the four-factor analysis.

## Oral Language Assistance

DRPT will provide LEP persons with oral language assistance in a timely manner at reception desks or when telephone contact is appropriate. Such assistance may take the form of qualified bilingual staff or using the DRPT's language service contractor.

Employment of bilingual staff in divisions and projects is attempted, when feasible, where the percentage of LEP customers or potential customers is statistically significant or where the frequency of contact with such persons will provide for efficient and effective communication. A decision to employ bilingual staff should be based on a needs assessment with due consideration given to budget constraints and department policy.

Oral translation competency should be considered when using a translator. In some cases, a family member or volunteer without formal certification might be a good choice, for instance when teaching an LEP person how to use the bus. In other circumstances, especially those that have the potential to affect a person's rights, a certified interpreter is necessary.

DRPT's oral notifications include a telephone attendant who can provide information about available language assistance services and how to get them.

## Written Language Assistance

Written materials that are routinely provided in English to customers and the general public should be translated into languages that are regularly encountered. A "Safe Harbor Provision" regarding the translations of documents is required by the U.S. DOT. They suggest providing written translations of vital documents for each eligible LEP language group that constitutes 5 percent or 1,000, whichever is less, of the population of persons eligible to be served or likely to be affected or encountered. The Safe Harbor Provision applies to the translation of written documents only and does not affect the requirement to provide meaningful access to LEP individuals through competent oral interpreters where oral language services are needed and are reasonable.

Note that some LEP people might have low literacy in their language. Written translations would not be effective or useful in those cases. When evaluating the need for written translation, the literacy level in the LEP population should be determined.

## Vital Documents

Vital documents are those that convey information critically affecting the ability of the service customer to make decisions. Whether or not a document (or the information it solicits) is "vital" depends upon the importance of the project, information, encounter, or service involved and the consequence to the LEP person if the information in question is not provided accurately or in a timely manner.

DRPT's vital documents are:

- Title VI Non-Discrimination Statement
- Title VI Complaint Procedures
- Language Assistance Plan
- Planning and Outreach Material

If individuals are interested in finding out other information about DRPT, they are directed to contact the Public Information Office at 804.786.4440. Additionally, DRPT's website offers Google Translate to navigate users to the Vital Documents posted on the website.

## DRPT Staff Training

Training DRPT staff on the policies and procedures of language assistance and how to determine whether a customer needs language assistance services is essential to bridging the gap between policies and actual practices. Training will include how to obtain language assistance services and communication with interpreters and translators.

Specialized training may be required of certain front-line staff who are likely to have considerable interaction with LEP individuals. DRPT staff will be trained on how to recognize potential Title VI issues and to properly respond to Title VI complaints, including those from LEP people on the basis of race, color, and national origin.

DRPT will include training on assisting LEP persons as part of its sensitivity and customer service training for all new front-line staff hires. Training information will include:

- A summary of DRPT's responsibilities under the U.S. DOT LEP Guidance
- A summary of the number and proportion of LEP persons in DRPT's service area, the frequency of contact between the LEP population and DRPT's programs and activities, and the importance of the programs and activities to the population
- A summary of DRPT's language assistance plan
- A description of the type of language assistance that DRPT is currently providing and instructions on how agency staff can access these products and services

## Monitoring and Updating the LEP Plan

This plan is designed to be flexible and is one that can be easily updated. At a minimum, DRPT will follow the Title VI Program update schedule for the LEP Plan (at least every three years) based on feedback, updated demographic data, and resource availability. However, major updates most likely will not occur until the next Census in 2020 unless DRPT finds it necessary and crucial for an update before such time.

DRPT will examine and update the LEP Plan based on the following:

- The number of LEP persons encountered annually
- How the needs of LEP persons have been addressed
- Whether local language assistance programs have been effective and sufficient to meet the needs of LEP persons
- Whether the transit system's financial resources are sufficient to fund language assistance resources needed during compliance reviews
- Changes to DRPT's available resources, such as technology, staff, and financial costs
- Whether DRPT has fulfilled the goals of the LEP Plan
- Whether complaints have been received concerning the agency's failure to meet the needs of LEP individuals

## Summary Of Plan

The key to providing meaningful access for LEP persons is to ensure that effective communication exists between the project, activity, or service and the LEP person. To accomplish effective communication, the following actions have been developed:

- Provide for oral language assistance as needed
- Notify LEP customers of the availability of language assistance services
- Translate vital documents in languages other than English according to the Safe Harbor Provision
- Train staff
- Monitor and evaluate access to language assistance
- Monitor subrecipients

# Appendix A: LEP Population per Jurisdiction

Accomack County			
Language	Number of LEP Individuals (5+)	Percent of State Population	Percent of LEP Population
Spanish	2,583	8.18%	64.93%
French, Haitian, or Cajun	919	2.91%	23.10%
German or other West Germanic languages	38	0.12%	0.96%
Russian, Polish, or other Slavic languages	11	0.03%	0.28%
Other Indo-European	105	0.33%	2.64%
Korean	5	0.02%	0.13%
Chinese (Incl. Mandarin, Cantonese)	132	0.42%	3.32%
Vietnamese	0	0.00%	0.00%
Tagalog (incl. Filipino)	57	0.18%	1.43%
Other Asian and Pacific Island languages	74	0.23%	1.86%
Arabic	54	0.17%	1.36%
Other and Unspecified	0	0.00%	0.00%
<b>Total LEP Population</b>	<b>3,978</b>	<b>12.59%</b>	
<b>Total Population</b>	<b>31,593</b>		

Albemarle County			
Language	Number of LEP Individuals (5+)	Percent of State Population	Percent of LEP Population
Spanish	5,252	4.92%	38.12%
French, Haitian, or Cajun	649	0.61%	4.71%
German or other West Germanic languages	683	0.64%	4.96%
Russian, Polish, or other Slavic languages	509	0.48%	3.69%
Other Indo-European	2,338	2.19%	16.97%
Korean	549	0.51%	3.99%
Chinese (Incl. Mandarin, Cantonese)	1,352	1.27%	9.81%
Vietnamese	271	0.25%	1.97%
Tagalog (incl. Filipino)	221	0.21%	1.60%
Other Asian and Pacific Island languages	958	0.90%	6.95%
Arabic	478	0.45%	3.47%
Other and Unspecified	516	0.48%	3.75%
<b>Total LEP Population</b>	<b>13,776</b>	<b>12.89%</b>	
<b>Total Population</b>	<b>106,847</b>		

Allegheny County			
Language	Number of LEP Individuals (5+)	Percent of State Population	Percent of LEP Population
Spanish	173	1.19%	68.92%
French, Haitian, or Cajun	0	0.00%	0.00%
German or other West Germanic languages	6	0.04%	2.39%
Russian, Polish, or other Slavic languages	44	0.30%	17.53%
Other Indo-European	23	0.16%	9.16%
Korean	0	0.00%	0.00%
Chinese (Incl. Mandarin, Cantonese)	5	0.03%	1.99%
Vietnamese	0	0.00%	0.00%
Tagalog (incl. Filipino)	0	0.00%	0.00%
Other Asian and Pacific Island languages	0	0.00%	0.00%
Arabic	0	0.00%	0.00%
Other and Unspecified	0	0.00%	0.00%
<b>Total LEP Population</b>	<b>251</b>	<b>1.73%</b>	
<b>Total Population</b>	<b>14,530</b>		

Amelia County			
Language	Number of LEP Individuals (5+)	Percent of State Population	Percent of LEP Population
Spanish	406	3.23%	95.08%
French, Haitian, or Cajun	21	0.17%	4.92%
German or other West Germanic languages	0	0.00%	0.00%
Russian, Polish, or other Slavic languages	0	0.00%	0.00%
Other Indo-European	0	0.00%	0.00%
Korean	0	0.00%	0.00%
Chinese (Incl. Mandarin, Cantonese)	0	0.00%	0.00%
Vietnamese	0	0.00%	0.00%
Tagalog (incl. Filipino)	0	0.00%	0.00%
Other Asian and Pacific Island languages	0	0.00%	0.00%
Arabic	0	0.00%	0.00%
Other and Unspecified	0	0.00%	0.00%
<b>Total LEP Population</b>	<b>427</b>	<b>3.39%</b>	
<b>Total Population</b>	<b>12,584</b>		

Amherst County			
Language	Number of LEP Individuals (5+)	Percent of State Population	Percent of LEP Population
Spanish	312	1.05%	49.92%
French, Haitian, or Cajun	63	0.21%	10.08%
German or other West Germanic languages	13	0.04%	2.08%
Russian, Polish, or other Slavic languages	0	0.00%	0.00%
Other Indo-European	35	0.12%	5.60%
Korean	22	0.07%	3.52%
Chinese (Incl. Mandarin, Cantonese)	32	0.11%	5.12%
Vietnamese	26	0.09%	4.16%
Tagalog (incl. Filipino)	33	0.11%	5.28%
Other Asian and Pacific Island languages	33	0.11%	5.28%
Arabic	0	0.00%	0.00%
Other and Unspecified	56	0.19%	8.96%
<b>Total LEP Population</b>	<b>625</b>	<b>2.10%</b>	
<b>Total Population</b>	<b>29,774</b>		

Appomattox County			
Language	Number of LEP Individuals (5+)	Percent of State Population	Percent of LEP Population
Spanish	107	0.70%	56.91%
French, Haitian, or Cajun	11	0.07%	5.85%
German or other West Germanic languages	12	0.08%	6.38%
Russian, Polish, or other Slavic languages	0	0.00%	0.00%
Other Indo-European	32	0.21%	17.02%
Korean	0	0.00%	0.00%
Chinese (Incl. Mandarin, Cantonese)	0	0.00%	0.00%
Vietnamese	12	0.08%	6.38%
Tagalog (incl. Filipino)	0	0.00%	0.00%
Other Asian and Pacific Island languages	0	0.00%	0.00%
Arabic	0	0.00%	0.00%
Other and Unspecified	14	0.09%	7.45%
<b>Total LEP Population</b>	<b>188</b>	<b>1.23%</b>	
<b>Total Population</b>	<b>15,248</b>		

Arlington County			
Language	Number of LEP Individuals (5+)	Percent of State Population	Percent of LEP Population
Spanish	28312	12.69%	44.48%
French, Haitian, or Cajun	2156	0.97%	3.39%
German or other West Germanic languages	1143	0.51%	1.80%
Russian, Polish, or other Slavic languages	2447	1.10%	3.84%
Other Indo-European	9016	4.04%	14.16%
Korean	1529	0.69%	2.40%
Chinese (Incl. Mandarin, Cantonese)	3941	1.77%	6.19%
Vietnamese	1154	0.52%	1.81%
Tagalog (incl. Filipino)	1064	0.48%	1.67%
Other Asian and Pacific Island languages	4235	1.90%	6.65%
Arabic	3662	1.64%	5.75%
Other and Unspecified	4992	2.24%	7.84%
<b>Total LEP Population</b>	<b>63,651</b>	<b>28.54%</b>	
<b>Total Population</b>	<b>223,025</b>		

Augusta County			
Language	Number of LEP Individuals (5+)	Percent of State Population	Percent of LEP Population
Spanish	1935	2.62%	64.44%
French, Haitian, or Cajun	283	0.38%	9.42%
German or other West Germanic languages	84	0.11%	2.80%
Russian, Polish, or other Slavic languages	228	0.31%	7.59%
Other Indo-European	150	0.20%	5.00%
Korean	3	0.00%	0.10%
Chinese (Incl. Mandarin, Cantonese)	0	0.00%	0.00%
Vietnamese	11	0.01%	0.37%
Tagalog (incl. Filipino)	39	0.05%	1.30%
Other Asian and Pacific Island languages	111	0.15%	3.70%
Arabic	85	0.11%	2.83%
Other and Unspecified	74	0.10%	2.46%
<b>Total LEP Population</b>	<b>3,003</b>	<b>4.06%</b>	
<b>Total Population</b>	<b>73,981</b>		

Bath County			
Language	Number of LEP Individuals (5+)	Percent of State Population	Percent of LEP Population
Spanish	16	0.40%	33.33%
French, Haitian, or Cajun	18	0.45%	37.50%
German or other West Germanic languages	0	0.00%	0.00%
Russian, Polish, or other Slavic languages	14	0.35%	29.17%
Other Indo-European	0	0.00%	0.00%
Korean	0	0.00%	0.00%
Chinese (Incl. Mandarin, Cantonese)	0	0.00%	0.00%
Vietnamese	0	0.00%	0.00%
Tagalog (incl. Filipino)	0	0.00%	0.00%
Other Asian and Pacific Island languages	0	0.00%	0.00%
Arabic	0	0.00%	0.00%
Other and Unspecified	0	0.00%	0.00%
<b>Total LEP Population</b>	<b>48</b>	<b>1.21%</b>	
<b>Total Population</b>	<b>3,970</b>		

Bedford County			
Language	Number of LEP Individuals (5+)	Percent of State Population	Percent of LEP Population
Spanish	1312	1.72%	50.17%
French, Haitian, or Cajun	269	0.35%	10.29%
German or other West Germanic languages	71	0.09%	2.72%
Russian, Polish, or other Slavic languages	49	0.06%	1.87%
Other Indo-European	271	0.36%	10.36%
Korean	50	0.07%	1.91%
Chinese (Incl. Mandarin, Cantonese)	49	0.06%	1.87%
Vietnamese	57	0.07%	2.18%
Tagalog (incl. Filipino)	77	0.10%	2.94%
Other Asian and Pacific Island languages	295	0.39%	11.28%
Arabic	76	0.10%	2.91%
Other and Unspecified	39	0.05%	1.49%
<b>Total LEP Population</b>	<b>2,615</b>	<b>3.43%</b>	
<b>Total Population</b>	<b>76,223</b>		

Bland County			
Language	Number of LEP Individuals (5+)	Percent of State Population	Percent of LEP Population
Spanish	73	1.22%	72.28%
French, Haitian, or Cajun	0	0.00%	0.00%
German or other West Germanic languages	14	0.23%	13.86%
Russian, Polish, or other Slavic languages	0	0.00%	0.00%
Other Indo-European	0	0.00%	0.00%
Korean	0	0.00%	0.00%
Chinese (Incl. Mandarin, Cantonese)	0	0.00%	0.00%
Vietnamese	0	0.00%	0.00%
Tagalog (incl. Filipino)	0	0.00%	0.00%
Other Asian and Pacific Island languages	9	0.15%	8.91%
Arabic	5	0.08%	4.95%
Other and Unspecified	0	0.00%	0.00%
<b>Total LEP Population</b>	<b>101</b>	<b>1.69%</b>	
<b>Total Population</b>	<b>5,978</b>		

Botetourt County			
Language	Number of LEP Individuals (5+)	Percent of State Population	Percent of LEP Population
Spanish	332	1.03%	59.93%
French, Haitian, or Cajun	36	0.11%	6.50%
German or other West Germanic languages	35	0.11%	6.32%
Russian, Polish, or other Slavic languages	13	0.04%	2.35%
Other Indo-European	38	0.12%	6.86%
Korean	22	0.07%	3.97%
Chinese (Incl. Mandarin, Cantonese)	1	0.00%	0.18%
Vietnamese	0	0.00%	0.00%
Tagalog (incl. Filipino)	7	0.02%	1.26%
Other Asian and Pacific Island languages	60	0.19%	10.83%
Arabic	0	0.00%	0.00%
Other and Unspecified	10	0.03%	1.81%
<b>Total LEP Population</b>	<b>554</b>	<b>1.71%</b>	
<b>Total Population</b>	<b>32,337</b>		

Brunswick County			
Language	Number of LEP Individuals (5+)	Percent of State Population	Percent of LEP Population
Spanish	330	2.16%	78.38%
French, Haitian, or Cajun	0	0.00%	0.00%
German or other West Germanic languages	2	0.01%	0.48%
Russian, Polish, or other Slavic languages	0	0.00%	0.00%
Other Indo-European	25	0.16%	5.94%
Korean	5	0.03%	1.19%
Chinese (Incl. Mandarin, Cantonese)	0	0.00%	0.00%
Vietnamese	0	0.00%	0.00%
Tagalog (incl. Filipino)	3	0.02%	0.71%
Other Asian and Pacific Island languages	0	0.00%	0.00%
Arabic	20	0.13%	4.75%
Other and Unspecified	36	0.24%	8.55%
<b>Total LEP Population</b>	<b>421</b>	<b>2.75%</b>	
<b>Total Population</b>	<b>15,310</b>		

Buchanan County			
Language	Number of LEP Individuals (5+)	Percent of State Population	Percent of LEP Population
Spanish	251	1.29%	60.92%
French, Haitian, or Cajun	14	0.07%	3.40%
German or other West Germanic languages	34	0.18%	8.25%
Russian, Polish, or other Slavic languages	0	0.00%	0.00%
Other Indo-European	20	0.10%	4.85%
Korean	6	0.03%	1.46%
Chinese (Incl. Mandarin, Cantonese)	0	0.00%	0.00%
Vietnamese	9	0.05%	2.18%
Tagalog (incl. Filipino)	0	0.00%	0.00%
Other Asian and Pacific Island languages	0	0.00%	0.00%
Arabic	32	0.16%	7.77%
Other and Unspecified	46	0.24%	11.17%
<b>Total LEP Population</b>	<b>412</b>	<b>2.12%</b>	
<b>Total Population</b>	<b>19,409</b>		

Buckingham County			
Language	Number of LEP Individuals (5+)	Percent of State Population	Percent of LEP Population
Spanish	287	1.78%	50.80%
French, Haitian, or Cajun	5	0.03%	0.88%
German or other West Germanic languages	223	1.39%	39.47%
Russian, Polish, or other Slavic languages	0	0.00%	0.00%
Other Indo-European	32	0.20%	5.66%
Korean	0	0.00%	0.00%
Chinese (Incl. Mandarin, Cantonese)	0	0.00%	0.00%
Vietnamese	0	0.00%	0.00%
Tagalog (incl. Filipino)	1	0.01%	0.18%
Other Asian and Pacific Island languages	0	0.00%	0.00%
Arabic	0	0.00%	0.00%
Other and Unspecified	17	0.11%	3.01%
<b>Total LEP Population</b>	<b>565</b>	<b>3.51%</b>	
<b>Total Population</b>	<b>16,084</b>		

Campbell County			
Language	Number of LEP Individuals (5+)	Percent of State Population	Percent of LEP Population
Spanish	1182	2.24%	56.50%
French, Haitian, or Cajun	25	0.05%	1.20%
German or other West Germanic languages	3	0.01%	0.14%
Russian, Polish, or other Slavic languages	24	0.05%	1.15%
Other Indo-European	70	0.13%	3.35%
Korean	24	0.05%	1.15%
Chinese (Incl. Mandarin, Cantonese)	51	0.10%	2.44%
Vietnamese	280	0.53%	13.38%
Tagalog (incl. Filipino)	14	0.03%	0.67%
Other Asian and Pacific Island languages	40	0.08%	1.91%
Arabic	24	0.05%	1.15%
Other and Unspecified	355	0.67%	16.97%
<b>Total LEP Population</b>	<b>2,092</b>	<b>3.97%</b>	
<b>Total Population</b>	<b>52,687</b>		

Caroline County			
Language	Number of LEP Individuals (5+)	Percent of State Population	Percent of LEP Population
Spanish	1333	4.54%	74.39%
French, Haitian, or Cajun	60	0.20%	3.35%
German or other West Germanic languages	65	0.22%	3.63%
Russian, Polish, or other Slavic languages	7	0.02%	0.39%
Other Indo-European	100	0.34%	5.58%
Korean	48	0.16%	2.68%
Chinese (Incl. Mandarin, Cantonese)	0	0.00%	0.00%
Vietnamese	20	0.07%	1.12%
Tagalog (incl. Filipino)	63	0.21%	3.52%
Other Asian and Pacific Island languages	68	0.23%	3.79%
Arabic	0	0.00%	0.00%
Other and Unspecified	28	0.10%	1.56%
<b>Total LEP Population</b>	<b>1,792</b>	<b>6.11%</b>	
<b>Total Population</b>	<b>29,346</b>		

Carroll County			
Language	Number of LEP Individuals (5+)	Percent of State Population	Percent of LEP Population
Spanish	791	2.84%	80.88%
French, Haitian, or Cajun	34	0.12%	3.48%
German or other West Germanic languages	47	0.17%	4.81%
Russian, Polish, or other Slavic languages	0	0.00%	0.00%
Other Indo-European	12	0.04%	1.23%
Korean	0	0.00%	0.00%
Chinese (Incl. Mandarin, Cantonese)	0	0.00%	0.00%
Vietnamese	0	0.00%	0.00%
Tagalog (incl. Filipino)	0	0.00%	0.00%
Other Asian and Pacific Island languages	24	0.09%	2.45%
Arabic	68	0.24%	6.95%
Other and Unspecified	2	0.01%	0.20%
<b>Total LEP Population</b>	<b>978</b>	<b>3.51%</b>	
<b>Total Population</b>	<b>27,895</b>		

Charles City County			
Language	Number of LEP Individuals (5+)	Percent of State Population	Percent of LEP Population
Spanish	85	1.31%	61.15%
French, Haitian, or Cajun	3	0.05%	2.16%
German or other West Germanic languages	22	0.34%	15.83%
Russian, Polish, or other Slavic languages	0	0.00%	0.00%
Other Indo-European	5	0.08%	3.60%
Korean	0	0.00%	0.00%
Chinese (Incl. Mandarin, Cantonese)	0	0.00%	0.00%
Vietnamese	0	0.00%	0.00%
Tagalog (incl. Filipino)	10	0.15%	7.19%
Other Asian and Pacific Island languages	6	0.09%	4.32%
Arabic	0	0.00%	0.00%
Other and Unspecified	8	0.12%	5.76%
<b>Total LEP Population</b>	<b>139</b>	<b>2.14%</b>	
<b>Total Population</b>	<b>6,499</b>		

Charlotte County			
Language	Number of LEP Individuals (5+)	Percent of State Population	Percent of LEP Population
Spanish	31	0.28%	25.62%
French, Haitian, or Cajun	36	0.33%	29.75%
German or other West Germanic languages	7	0.06%	5.79%
Russian, Polish, or other Slavic languages	1	0.01%	0.83%
Other Indo-European	0	0.00%	0.00%
Korean	26	0.24%	21.49%
Chinese (Incl. Mandarin, Cantonese)	0	0.00%	0.00%
Vietnamese	4	0.04%	3.31%
Tagalog (incl. Filipino)	0	0.00%	0.00%
Other Asian and Pacific Island languages	8	0.07%	6.61%
Arabic	0	0.00%	0.00%
Other and Unspecified	8	0.07%	6.61%
<b>Total LEP Population</b>	<b>121</b>	<b>1.10%</b>	
<b>Total Population</b>	<b>10,951</b>		

Chesterfield County			
Language	Number of LEP Individuals (5+)	Percent of State Population	Percent of LEP Population
Spanish	28,017	8.13%	62.22%
French, Haitian, or Cajun	2,115	0.61%	4.70%
German or other West Germanic languages	1,221	0.35%	2.71%
Russian, Polish, or other Slavic languages	664	0.19%	1.47%
Other Indo-European	3,659	1.06%	8.13%
Korean	1,471	0.43%	3.27%
Chinese (Incl. Mandarin, Cantonese)	1,578	0.46%	3.50%
Vietnamese	784	0.23%	1.74%
Tagalog (incl. Filipino)	1,048	0.30%	2.33%
Other Asian and Pacific Island languages	1,634	0.47%	3.63%
Arabic	1,422	0.41%	3.16%
Other and Unspecified	1,418	0.41%	3.15%
<b>Total LEP Population</b>	<b>45,031</b>	<b>13.07%</b>	
<b>Total Population</b>	<b>344,617</b>		

Clarke County			
Language	Number of LEP Individuals (5+)	Percent of State Population	Percent of LEP Population
Spanish	644	4.49%	60.81%
French, Haitian, or Cajun	1	0.01%	0.09%
German or other West Germanic languages	210	1.46%	19.83%
Russian, Polish, or other Slavic languages	34	0.24%	3.21%
Other Indo-European	39	0.27%	3.68%
Korean	6	0.04%	0.57%
Chinese (Incl. Mandarin, Cantonese)	26	0.18%	2.46%
Vietnamese	0	0.00%	0.00%
Tagalog (incl. Filipino)	99	0.69%	9.35%
Other Asian and Pacific Island languages	0	0.00%	0.00%
Arabic	0	0.00%	0.00%
Other and Unspecified	0	0.00%	0.00%
<b>Total LEP Population</b>	<b>1,059</b>	<b>7.38%</b>	
<b>Total Population</b>	<b>14,350</b>		

Craig County			
Language	Number of LEP Individuals (5+)	Percent of State Population	Percent of LEP Population
Spanish	13	0.29%	31.71%
French, Haitian, or Cajun	0	0.00%	0.00%
German or other West Germanic languages	0	0.00%	0.00%
Russian, Polish, or other Slavic languages	0	0.00%	0.00%
Other Indo-European	0	0.00%	0.00%
Korean	0	0.00%	0.00%
Chinese (Incl. Mandarin, Cantonese)	0	0.00%	0.00%
Vietnamese	0	0.00%	0.00%
Tagalog (incl. Filipino)	0	0.00%	0.00%
Other Asian and Pacific Island languages	0	0.00%	0.00%
Arabic	0	0.00%	0.00%
Other and Unspecified	28	0.62%	68.29%
<b>Total LEP Population</b>	<b>41</b>	<b>0.91%</b>	
<b>Total Population</b>	<b>4,523</b>		

Culpeper County			
Language	Number of LEP Individuals (5+)	Percent of State Population	Percent of LEP Population
Spanish	4,648	9.38%	76.60%
French, Haitian, or Cajun	207	0.42%	3.41%
German or other West Germanic languages	202	0.41%	3.33%
Russian, Polish, or other Slavic languages	71	0.14%	1.17%
Other Indo-European	197	0.40%	3.25%
Korean	39	0.08%	0.64%
Chinese (Incl. Mandarin, Cantonese)	60	0.12%	0.99%
Vietnamese	9	0.02%	0.15%
Tagalog (incl. Filipino)	0	0.00%	0.00%
Other Asian and Pacific Island languages	117	0.24%	1.93%
Arabic	336	0.68%	5.54%
Other and Unspecified	182	0.37%	3.00%
<b>Total LEP Population</b>	<b>6,068</b>	<b>12.24%</b>	
<b>Total Population</b>	<b>49,557</b>		

Cumberland County			
Language	Number of LEP Individuals (5+)	Percent of State Population	Percent of LEP Population
Spanish	20	0.22%	11.83%
French, Haitian, or Cajun	0	0.00%	0.00%
German or other West Germanic languages	76	0.82%	44.97%
Russian, Polish, or other Slavic languages	21	0.23%	12.43%
Other Indo-European	0	0.00%	0.00%
Korean	33	0.36%	19.53%
Chinese (Incl. Mandarin, Cantonese)	0	0.00%	0.00%
Vietnamese	0	0.00%	0.00%
Tagalog (incl. Filipino)	13	0.14%	7.69%
Other Asian and Pacific Island languages	0	0.00%	0.00%
Arabic	0	0.00%	0.00%
Other and Unspecified	6	0.06%	3.55%
<b>Total LEP Population</b>	<b>169</b>	<b>1.82%</b>	
<b>Total Population</b>	<b>9,272</b>		

Dickenson County			
Language	Number of LEP Individuals (5+)	Percent of State Population	Percent of LEP Population
Spanish	13	0.10%	23.21%
French, Haitian, or Cajun	30	0.22%	53.57%
German or other West Germanic languages	0	0.00%	0.00%
Russian, Polish, or other Slavic languages	13	0.10%	23.21%
Other Indo-European	0	0.00%	0.00%
Korean	0	0.00%	0.00%
Chinese (Incl. Mandarin, Cantonese)	0	0.00%	0.00%
Vietnamese	0	0.00%	0.00%
Tagalog (incl. Filipino)	0	0.00%	0.00%
Other Asian and Pacific Island languages	0	0.00%	0.00%
Arabic	0	0.00%	0.00%
Other and Unspecified	0	0.00%	0.00%
<b>Total LEP Population</b>	<b>56</b>	<b>0.42%</b>	
<b>Total Population</b>	<b>13,440</b>		

Dinwiddie County			
Language	Number of LEP Individuals (5+)	Percent of State Population	Percent of LEP Population
Spanish	636	2.39%	62.29%
French, Haitian, or Cajun	93	0.35%	9.11%
German or other West Germanic languages	155	0.58%	15.18%
Russian, Polish, or other Slavic languages	13	0.05%	1.27%
Other Indo-European	0	0.00%	0.00%
Korean	29	0.11%	2.84%
Chinese (Incl. Mandarin, Cantonese)	0	0.00%	0.00%
Vietnamese	14	0.05%	1.37%
Tagalog (incl. Filipino)	7	0.03%	0.69%
Other Asian and Pacific Island languages	60	0.23%	5.88%
Arabic	0	0.00%	0.00%
Other and Unspecified	14	0.05%	1.37%
<b>Total LEP Population</b>	<b>1,021</b>	<b>3.84%</b>	
<b>Total Population</b>	<b>26,621</b>		

Essex County			
Language	Number of LEP Individuals (5+)	Percent of State Population	Percent of LEP Population
Spanish	441	4.37%	72.53%
French, Haitian, or Cajun	7	0.07%	1.15%
German or other West Germanic languages	1	0.01%	0.16%
Russian, Polish, or other Slavic languages	0	0.00%	0.00%
Other Indo-European	90	0.89%	14.80%
Korean	15	0.15%	2.47%
Chinese (Incl. Mandarin, Cantonese)	37	0.37%	6.09%
Vietnamese	0	0.00%	0.00%
Tagalog (incl. Filipino)	0	0.00%	0.00%
Other Asian and Pacific Island languages	17	0.17%	2.80%
Arabic	0	0.00%	0.00%
Other and Unspecified	0	0.00%	0.00%
<b>Total LEP Population</b>	<b>608</b>	<b>6.02%</b>	
<b>Total Population</b>	<b>10,101</b>		

Fairfax County			
Language	Number of LEP Individuals (5+)	Percent of State Population	Percent of LEP Population
Spanish	143,726	13.35%	34.49%
French, Haitian, or Cajun	7,372	0.68%	1.77%
German or other West Germanic languages	5,242	0.49%	1.26%
Russian, Polish, or other Slavic languages	9,078	0.84%	2.18%
Other Indo-European	69,743	6.48%	16.73%
Korean	33,349	3.10%	8.00%
Chinese (Incl. Mandarin, Cantonese)	27,418	2.55%	6.58%
Vietnamese	26,259	2.44%	6.30%
Tagalog (incl. Filipino)	10,787	1.00%	2.59%
Other Asian and Pacific Island languages	31,584	2.93%	7.58%
Arabic	23,786	2.21%	5.71%
Other and Unspecified	28,424	2.64%	6.82%
<b>Total LEP Population</b>	<b>416,768</b>	<b>38.73%</b>	
<b>Total Population</b>	<b>1,076,210</b>		

Fauquier County			
Language	Number of LEP Individuals (5+)	Percent of State Population	Percent of LEP Population
Spanish	5,240	19.68%	72.22%
French, Haitian, or Cajun	212	0.80%	2.92%
German or other West Germanic languages	190	0.71%	2.62%
Russian, Polish, or other Slavic languages	127	0.48%	1.75%
Other Indo-European	687	2.58%	9.47%
Korean	98	0.37%	1.35%
Chinese (Incl. Mandarin, Cantonese)	83	0.31%	1.14%
Vietnamese	93	0.35%	1.28%
Tagalog (incl. Filipino)	145	0.54%	2.00%
Other Asian and Pacific Island languages	154	0.58%	2.12%
Arabic	84	0.32%	1.16%
Other and Unspecified	143	0.54%	1.97%
<b>Total LEP Population</b>	<b>7,256</b>	<b>27.26%</b>	
<b>Total Population</b>	<b>69,187</b>		

Floyd County			
Language	Number of LEP Individuals (5+)	Percent of State Population	Percent of LEP Population
Spanish	445	2.99%	68.67%
French, Haitian, or Cajun	30	0.20%	4.63%
German or other West Germanic languages	79	0.53%	12.19%
Russian, Polish, or other Slavic languages	0	0.00%	0.00%
Other Indo-European	0	0.00%	0.00%
Korean	11	0.07%	1.70%
Chinese (Incl. Mandarin, Cantonese)	35	0.24%	5.40%
Vietnamese	0	0.00%	0.00%
Tagalog (incl. Filipino)	14	0.09%	2.16%
Other Asian and Pacific Island languages	0	0.00%	0.00%
Arabic	10	0.07%	1.54%
Other and Unspecified	24	0.16%	3.70%
<b>Total LEP Population</b>	<b>648</b>	<b>4.36%</b>	
<b>Total Population</b>	<b>14,871</b>		

Fluvanna County			
Language	Number of LEP Individuals (5+)	Percent of State Population	Percent of LEP Population
Spanish	696	2.67%	52.25%
French, Haitian, or Cajun	152	0.58%	11.41%
German or other West Germanic languages	78	0.30%	5.86%
Russian, Polish, or other Slavic languages	26	0.10%	1.95%
Other Indo-European	164	0.63%	12.31%
Korean	70	0.27%	5.26%
Chinese (Incl. Mandarin, Cantonese)	82	0.31%	6.16%
Vietnamese	0	0.00%	0.00%
Tagalog (incl. Filipino)	18	0.07%	1.35%
Other Asian and Pacific Island languages	38	0.15%	2.85%
Arabic	0	0.00%	0.00%
Other and Unspecified	8	0.03%	0.60%
<b>Total LEP Population</b>	<b>1,332</b>	<b>5.11%</b>	
<b>Total Population</b>	<b>26,055</b>		

Franklin County			
Language	Number of LEP Individuals (5+)	Percent of State Population	Percent of LEP Population
Spanish	1,062	2.02%	65.03%
French, Haitian, or Cajun	47	0.09%	2.88%
German or other West Germanic languages	123	0.23%	7.53%
Russian, Polish, or other Slavic languages	38	0.07%	2.33%
Other Indo-European	87	0.17%	5.33%
Korean	14	0.03%	0.86%
Chinese (Incl. Mandarin, Cantonese)	37	0.07%	2.27%
Vietnamese	0	0.00%	0.00%
Tagalog (incl. Filipino)	32	0.06%	1.96%
Other Asian and Pacific Island languages	63	0.12%	3.86%
Arabic	112	0.21%	6.86%
Other and Unspecified	18	0.03%	1.10%
<b>Total LEP Population</b>	<b>1,633</b>	<b>3.11%</b>	
<b>Total Population</b>	<b>52,463</b>		

Frederick County			
Language	Number of LEP Individuals (5+)	Percent of State Population	Percent of LEP Population
Spanish	7,538	8.69%	79.34%
French, Haitian, or Cajun	132	0.15%	1.39%
German or other West Germanic languages	242	0.28%	2.55%
Russian, Polish, or other Slavic languages	119	0.14%	1.25%
Other Indo-European	557	0.64%	5.86%
Korean	25	0.03%	0.26%
Chinese (Incl. Mandarin, Cantonese)	125	0.14%	1.32%
Vietnamese	157	0.18%	1.65%
Tagalog (incl. Filipino)	183	0.21%	1.93%
Other Asian and Pacific Island languages	272	0.31%	2.86%
Arabic	39	0.04%	0.41%
Other and Unspecified	112	0.13%	1.18%
<b>Total LEP Population</b>	<b>9,501</b>	<b>10.95%</b>	
<b>Total Population</b>	<b>86,753</b>		

Giles County			
Language	Number of LEP Individuals (5+)	Percent of State Population	Percent of LEP Population
Spanish	181	1.14%	46.65%
French, Haitian, or Cajun	6	0.04%	1.55%
German or other West Germanic languages	99	0.62%	25.52%
Russian, Polish, or other Slavic languages	0	0.00%	0.00%
Other Indo-European	18	0.11%	4.64%
Korean	0	0.00%	0.00%
Chinese (Incl. Mandarin, Cantonese)	0	0.00%	0.00%
Vietnamese	0	0.00%	0.00%
Tagalog (incl. Filipino)	50	0.31%	12.89%
Other Asian and Pacific Island languages	23	0.14%	5.93%
Arabic	0	0.00%	0.00%
Other and Unspecified	11	0.07%	2.84%
<b>Total LEP Population</b>	<b>388</b>	<b>2.44%</b>	
<b>Total Population</b>	<b>15,898</b>		

Gloucester County			
Language	Number of LEP Individuals (5+)	Percent of State Population	Percent of LEP Population
Spanish	619	1.67%	56.68%
French, Haitian, or Cajun	102	0.28%	9.34%
German or other West Germanic languages	106	0.29%	9.71%
Russian, Polish, or other Slavic languages	26	0.07%	2.38%
Other Indo-European	116	0.31%	10.62%
Korean	39	0.11%	3.57%
Chinese (Incl. Mandarin, Cantonese)	39	0.11%	3.57%
Vietnamese	0	0.00%	0.00%
Tagalog (incl. Filipino)	0	0.00%	0.00%
Other Asian and Pacific Island languages	35	0.09%	3.21%
Arabic	0	0.00%	0.00%
Other and Unspecified	10	0.03%	0.92%
<b>Total LEP Population</b>	<b>1,092</b>	<b>2.95%</b>	
<b>Total Population</b>	<b>37,021</b>		

Goochland County			
Language	Number of LEP Individuals (5+)	Percent of State Population	Percent of LEP Population
Spanish	197	0.82%	15.14%
French, Haitian, or Cajun	96	0.40%	7.38%
German or other West Germanic languages	107	0.45%	8.22%
Russian, Polish, or other Slavic languages	0	0.00%	0.00%
Other Indo-European	522	2.17%	40.12%
Korean	20	0.08%	1.54%
Chinese (Incl. Mandarin, Cantonese)	19	0.08%	1.46%
Vietnamese	200	0.83%	15.37%
Tagalog (incl. Filipino)	0	0.00%	0.00%
Other Asian and Pacific Island languages	69	0.29%	5.30%
Arabic	0	0.00%	0.00%
Other and Unspecified	71	0.30%	5.46%
<b>Total LEP Population</b>	<b>1,301</b>	<b>5.42%</b>	
<b>Total Population</b>	<b>24,001</b>		

Grayson County			
Language	Number of LEP Individuals (5+)	Percent of State Population	Percent of LEP Population
Spanish	423	2.86%	75.27%
French, Haitian, or Cajun	11	0.07%	1.96%
German or other West Germanic languages	9	0.06%	1.60%
Russian, Polish, or other Slavic languages	21	0.14%	3.74%
Other Indo-European	4	0.03%	0.71%
Korean	65	0.44%	11.57%
Chinese (Incl. Mandarin, Cantonese)	10	0.07%	1.78%
Vietnamese	0	0.00%	0.00%
Tagalog (incl. Filipino)	0	0.00%	0.00%
Other Asian and Pacific Island languages	14	0.09%	2.49%
Arabic	5	0.03%	0.89%
Other and Unspecified	0	0.00%	0.00%
<b>Total LEP Population</b>	<b>562</b>	<b>3.80%</b>	
<b>Total Population</b>	<b>14,775</b>		

Greene County			
Language	Number of LEP Individuals (5+)	Percent of State Population	Percent of LEP Population
Spanish	575	2.95%	44.33%
French, Haitian, or Cajun	35	0.18%	2.70%
German or other West Germanic languages	95	0.49%	7.32%
Russian, Polish, or other Slavic languages	108	0.55%	8.33%
Other Indo-European	250	1.28%	19.28%
Korean	28	0.14%	2.16%
Chinese (Incl. Mandarin, Cantonese)	54	0.28%	4.16%
Vietnamese	0	0.00%	0.00%
Tagalog (incl. Filipino)	31	0.16%	2.39%
Other Asian and Pacific Island languages	72	0.37%	5.55%
Arabic	49	0.25%	3.78%
Other and Unspecified	0	0.00%	0.00%
<b>Total LEP Population</b>	<b>1,297</b>	<b>6.66%</b>	
<b>Total Population</b>	<b>19,483</b>		

Greenville County			
Language	Number of LEP Individuals (5+)	Percent of State Population	Percent of LEP Population
Spanish	443	4.08%	63.83%
French, Haitian, or Cajun	5	0.05%	0.72%
German or other West Germanic languages	24	0.22%	3.46%
Russian, Polish, or other Slavic languages	0	0.00%	0.00%
Other Indo-European	17	0.16%	2.45%
Korean	0	0.00%	0.00%
Chinese (Incl. Mandarin, Cantonese)	0	0.00%	0.00%
Vietnamese	0	0.00%	0.00%
Tagalog (incl. Filipino)	0	0.00%	0.00%
Other Asian and Pacific Island languages	0	0.00%	0.00%
Arabic	205	1.89%	29.54%
Other and Unspecified	0	0.00%	0.00%
<b>Total LEP Population</b>	<b>694</b>	<b>6.39%</b>	
<b>Total Population</b>	<b>10,857</b>		

Halifax County			
Language	Number of LEP Individuals (5+)	Percent of State Population	Percent of LEP Population
Spanish	475	1.47%	50.05%
French, Haitian, or Cajun	0	0.00%	0.00%
German or other West Germanic languages	251	0.78%	26.45%
Russian, Polish, or other Slavic languages	0	0.00%	0.00%
Other Indo-European	35	0.11%	3.69%
Korean	15	0.05%	1.58%
Chinese (Incl. Mandarin, Cantonese)	0	0.00%	0.00%
Vietnamese	0	0.00%	0.00%
Tagalog (incl. Filipino)	32	0.10%	3.37%
Other Asian and Pacific Island languages	10	0.03%	1.05%
Arabic	10	0.03%	1.05%
Other and Unspecified	121	0.37%	12.75%
<b>Total LEP Population</b>	<b>949</b>	<b>2.94%</b>	
<b>Total Population</b>	<b>32,309</b>		

Hanover County			
Language	Number of LEP Individuals (5+)	Percent of State Population	Percent of LEP Population
Spanish	1,953	1.86%	43.89%
French, Haitian, or Cajun	63	0.06%	1.42%
German or other West Germanic languages	231	0.22%	5.19%
Russian, Polish, or other Slavic languages	169	0.16%	3.80%
Other Indo-European	598	0.57%	13.44%
Korean	111	0.11%	2.49%
Chinese (Incl. Mandarin, Cantonese)	148	0.14%	3.33%
Vietnamese	57	0.05%	1.28%
Tagalog (incl. Filipino)	137	0.13%	3.08%
Other Asian and Pacific Island languages	500	0.48%	11.24%
Arabic	321	0.31%	7.21%
Other and Unspecified	162	0.15%	3.64%
<b>Total LEP Population</b>	<b>4,450</b>	<b>4.23%</b>	
<b>Total Population</b>	<b>105,118</b>		

Henrico County			
Language	Number of LEP Individuals (5+)	Percent of State Population	Percent of LEP Population
Spanish	13,873	4.42%	28.69%
French, Haitian, or Cajun	1,082	0.35%	2.24%
German or other West Germanic languages	790	0.25%	1.63%
Russian, Polish, or other Slavic languages	1,341	0.43%	2.77%
Other Indo-European	9,379	2.99%	19.40%
Korean	1,060	0.34%	2.19%
Chinese (Incl. Mandarin, Cantonese)	3,297	1.05%	6.82%
Vietnamese	3,135	1.00%	6.48%
Tagalog (incl. Filipino)	999	0.32%	2.07%
Other Asian and Pacific Island languages	7,986	2.55%	16.52%
Arabic	3,013	0.96%	6.23%
Other and Unspecified	2,400	0.77%	4.96%
<b>Total LEP Population</b>	<b>48,355</b>	<b>15.42%</b>	
<b>Total Population</b>	<b>313,577</b>		

Henry County			
Language	Number of LEP Individuals (5+)	Percent of State Population	Percent of LEP Population
Spanish	2,477	5.11%	80.21%
French, Haitian, or Cajun	21	0.04%	0.68%
German or other West Germanic languages	54	0.11%	1.75%
Russian, Polish, or other Slavic languages	18	0.04%	0.58%
Other Indo-European	196	0.40%	6.35%
Korean	0	0.00%	0.00%
Chinese (Incl. Mandarin, Cantonese)	11	0.02%	0.36%
Vietnamese	88	0.18%	2.85%
Tagalog (incl. Filipino)	0	0.00%	0.00%
Other Asian and Pacific Island languages	78	0.16%	2.53%
Arabic	107	0.22%	3.47%
Other and Unspecified	38	0.08%	1.23%
<b>Total LEP Population</b>	<b>3,088</b>	<b>6.37%</b>	
<b>Total Population</b>	<b>48,502</b>		

Highland County			
Language	Number of LEP Individuals (5+)	Percent of State Population	Percent of LEP Population
Spanish	21	0.96%	46.67%
French, Haitian, or Cajun	0	0.00%	0.00%
German or other West Germanic languages	5	0.23%	11.11%
Russian, Polish, or other Slavic languages	0	0.00%	0.00%
Other Indo-European	0	0.00%	0.00%
Korean	6	0.27%	13.33%
Chinese (Incl. Mandarin, Cantonese)	0	0.00%	0.00%
Vietnamese	0	0.00%	0.00%
Tagalog (incl. Filipino)	13	0.59%	28.89%
Other Asian and Pacific Island languages	0	0.00%	0.00%
Arabic	0	0.00%	0.00%
Other and Unspecified	0	0.00%	0.00%
<b>Total LEP Population</b>	<b>45</b>	<b>2.06%</b>	
<b>Total Population</b>	<b>2,186</b>		

Isle of Wight County			
Language	Number of LEP Individuals (5+)	Percent of State Population	Percent of LEP Population
Spanish	1,076	2.91%	61.66%
French, Haitian, or Cajun	69	0.19%	3.95%
German or other West Germanic languages	81	0.22%	4.64%
Russian, Polish, or other Slavic languages	108	0.29%	6.19%
Other Indo-European	154	0.42%	8.83%
Korean	93	0.25%	5.33%
Chinese (Incl. Mandarin, Cantonese)	11	0.03%	0.63%
Vietnamese	42	0.11%	2.41%
Tagalog (incl. Filipino)	43	0.12%	2.46%
Other Asian and Pacific Island languages	29	0.08%	1.66%
Arabic	0	0.00%	0.00%
Other and Unspecified	39	0.11%	2.23%
<b>Total LEP Population</b>	<b>1,745</b>	<b>4.72%</b>	
<b>Total Population</b>	<b>36,986</b>		

James City County			
Language	Number of LEP Individuals (5+)	Percent of State Population	Percent of LEP Population
Spanish	2,585	3.45%	46.12%
French, Haitian, or Cajun	338	0.45%	6.03%
German or other West Germanic languages	393	0.52%	7.01%
Russian, Polish, or other Slavic languages	173	0.23%	3.09%
Other Indo-European	332	0.44%	5.92%
Korean	123	0.16%	2.19%
Chinese (Incl. Mandarin, Cantonese)	443	0.59%	7.90%
Vietnamese	118	0.16%	2.11%
Tagalog (incl. Filipino)	293	0.39%	5.23%
Other Asian and Pacific Island languages	428	0.57%	7.64%
Arabic	161	0.21%	2.87%
Other and Unspecified	218	0.29%	3.89%
<b>Total LEP Population</b>	<b>5,605</b>	<b>7.48%</b>	
<b>Total Population</b>	<b>74,974</b>		

King and Queen County			
Language	Number of LEP Individuals (5+)	Percent of State Population	Percent of LEP Population
Spanish	97	1.52%	75.19%
French, Haitian, or Cajun	11	0.17%	8.53%
German or other West Germanic languages	0	0.00%	0.00%
Russian, Polish, or other Slavic languages	0	0.00%	0.00%
Other Indo-European	0	0.00%	0.00%
Korean	0	0.00%	0.00%
Chinese (Incl. Mandarin, Cantonese)	0	0.00%	0.00%
Vietnamese	0	0.00%	0.00%
Tagalog (incl. Filipino)	0	0.00%	0.00%
Other Asian and Pacific Island languages	0	0.00%	0.00%
Arabic	0	0.00%	0.00%
Other and Unspecified	21	0.33%	16.28%
<b>Total LEP Population</b>	<b>129</b>	<b>2.02%</b>	
<b>Total Population</b>	<b>6,381</b>		

King George County			
Language	Number of LEP Individuals (5+)	Percent of State Population	Percent of LEP Population
Spanish	745	2.93%	59.22%
French, Haitian, or Cajun	5	0.02%	0.40%
German or other West Germanic languages	123	0.48%	9.78%
Russian, Polish, or other Slavic languages	20	0.08%	1.59%
Other Indo-European	122	0.48%	9.70%
Korean	32	0.13%	2.54%
Chinese (Incl. Mandarin, Cantonese)	65	0.26%	5.17%
Vietnamese	27	0.11%	2.15%
Tagalog (incl. Filipino)	32	0.13%	2.54%
Other Asian and Pacific Island languages	11	0.04%	0.87%
Arabic	0	0.00%	0.00%
Other and Unspecified	76	0.30%	6.04%
<b>Total LEP Population</b>	<b>1,258</b>	<b>4.95%</b>	
<b>Total Population</b>	<b>25,419</b>		

King William County			
Language	Number of LEP Individuals (5+)	Percent of State Population	Percent of LEP Population
Spanish	184	1.10%	54.44%
French, Haitian, or Cajun	21	0.13%	6.21%
German or other West Germanic languages	35	0.21%	10.36%
Russian, Polish, or other Slavic languages	0	0.00%	0.00%
Other Indo-European	20	0.12%	5.92%
Korean	0	0.00%	0.00%
Chinese (Incl. Mandarin, Cantonese)	0	0.00%	0.00%
Vietnamese	43	0.26%	12.72%
Tagalog (incl. Filipino)	13	0.08%	3.85%
Other Asian and Pacific Island languages	0	0.00%	0.00%
Arabic	0	0.00%	0.00%
Other and Unspecified	22	0.13%	6.51%
<b>Total LEP Population</b>	<b>338</b>	<b>2.02%</b>	
<b>Total Population</b>	<b>16,771</b>		

Lancaster County			
Language	Number of LEP Individuals (5+)	Percent of State Population	Percent of LEP Population
Spanish	278	2.64%	55.16%
French, Haitian, or Cajun	51	0.48%	10.12%
German or other West Germanic languages	67	0.64%	13.29%
Russian, Polish, or other Slavic languages	0	0.00%	0.00%
Other Indo-European	36	0.34%	7.14%
Korean	0	0.00%	0.00%
Chinese (Incl. Mandarin, Cantonese)	35	0.33%	6.94%
Vietnamese	0	0.00%	0.00%
Tagalog (incl. Filipino)	2	0.02%	0.40%
Other Asian and Pacific Island languages	11	0.10%	2.18%
Arabic	0	0.00%	0.00%
Other and Unspecified	24	0.23%	4.76%
<b>Total LEP Population</b>	<b>504</b>	<b>4.79%</b>	
<b>Total Population</b>	<b>10,517</b>		

Lee County			
Language	Number of LEP Individuals (5+)	Percent of State Population	Percent of LEP Population
Spanish	427	2.01%	77.36%
French, Haitian, or Cajun	9	0.04%	1.63%
German or other West Germanic languages	19	0.09%	3.44%
Russian, Polish, or other Slavic languages	0	0.00%	0.00%
Other Indo-European	21	0.10%	3.80%
Korean	10	0.05%	1.81%
Chinese (Incl. Mandarin, Cantonese)	0	0.00%	0.00%
Vietnamese	16	0.08%	2.90%
Tagalog (incl. Filipino)	3	0.01%	0.54%
Other Asian and Pacific Island languages	0	0.00%	0.00%
Arabic	27	0.13%	4.89%
Other and Unspecified	20	0.09%	3.62%
<b>Total LEP Population</b>	<b>552</b>	<b>2.60%</b>	
<b>Total Population</b>	<b>21,260</b>		

Loudon County			
Language	Number of LEP Individuals (5+)	Percent of State Population	Percent of LEP Population
Spanish	41,498	10.55%	31.99%
French, Haitian, or Cajun	2,669	0.68%	2.06%
German or other West Germanic languages	2,371	0.60%	1.83%
Russian, Polish, or other Slavic languages	2,340	0.59%	1.80%
Other Indo-European	34,326	8.73%	26.46%
Korean	3,483	0.89%	2.68%
Chinese (Incl. Mandarin, Cantonese)	4,302	1.09%	3.32%
Vietnamese	4,895	1.24%	3.77%
Tagalog (incl. Filipino)	3,092	0.79%	2.38%
Other Asian and Pacific Island languages	21,145	5.38%	16.30%
Arabic	6,339	1.61%	4.89%
Other and Unspecified	3,261	0.83%	2.51%
<b>Total LEP Population</b>	<b>129,721</b>	<b>32.98%</b>	
<b>Total Population</b>	<b>393,369</b>		

Louisa County			
Language	Number of LEP Individuals (5+)	Percent of State Population	Percent of LEP Population
Spanish	1,169	3.24%	47.16%
French, Haitian, or Cajun	49	0.14%	1.98%
German or other West Germanic languages	251	0.70%	10.13%
Russian, Polish, or other Slavic languages	394	1.09%	15.89%
Other Indo-European	439	1.22%	17.71%
Korean	0	0.00%	0.00%
Chinese (Incl. Mandarin, Cantonese)	40	0.11%	1.61%
Vietnamese	21	0.06%	0.85%
Tagalog (incl. Filipino)	65	0.18%	2.62%
Other Asian and Pacific Island languages	39	0.11%	1.57%
Arabic	0	0.00%	0.00%
Other and Unspecified	12	0.03%	0.48%
<b>Total LEP Population</b>	<b>2,479</b>	<b>6.87%</b>	
<b>Total Population</b>	<b>36,099</b>		

Lunenburg County			
Language	Number of LEP Individuals (5+)	Percent of State Population	Percent of LEP Population
Spanish	531	4.65%	81.44%
French, Haitian, or Cajun	0	0.00%	0.00%
German or other West Germanic languages	34	0.30%	5.21%
Russian, Polish, or other Slavic languages	0	0.00%	0.00%
Other Indo-European	23	0.20%	3.53%
Korean	0	0.00%	0.00%
Chinese (Incl. Mandarin, Cantonese)	0	0.00%	0.00%
Vietnamese	0	0.00%	0.00%
Tagalog (incl. Filipino)	16	0.14%	2.45%
Other Asian and Pacific Island languages	1	0.01%	0.15%
Arabic	47	0.41%	7.21%
Other and Unspecified	0	0.00%	0.00%
<b>Total LEP Population</b>	<b>652</b>	<b>5.71%</b>	
<b>Total Population</b>	<b>11,418</b>		

Madison County			
Language	Number of LEP Individuals (5+)	Percent of State Population	Percent of LEP Population
Spanish	211	1.61%	46.48%
French, Haitian, or Cajun	0	0.00%	0.00%
German or other West Germanic languages	51	0.39%	11.23%
Russian, Polish, or other Slavic languages	108	0.82%	23.79%
Other Indo-European	16	0.12%	3.52%
Korean	0	0.00%	0.00%
Chinese (Incl. Mandarin, Cantonese)	0	0.00%	0.00%
Vietnamese	0	0.00%	0.00%
Tagalog (incl. Filipino)	68	0.52%	14.98%
Other Asian and Pacific Island languages	0	0.00%	0.00%
Arabic	0	0.00%	0.00%
Other and Unspecified	0	0.00%	0.00%
<b>Total LEP Population</b>	<b>454</b>	<b>3.47%</b>	
<b>Total Population</b>	<b>13,094</b>		

Mathews County			
Language	Number of LEP Individuals (5+)	Percent of State Population	Percent of LEP Population
Spanish	222	2.68%	77.08%
French, Haitian, or Cajun	34	0.41%	11.81%
German or other West Germanic languages	32	0.39%	11.11%
Russian, Polish, or other Slavic languages	0	0.00%	0.00%
Other Indo-European	0	0.00%	0.00%
Korean	0	0.00%	0.00%
Chinese (Incl. Mandarin, Cantonese)	0	0.00%	0.00%
Vietnamese	0	0.00%	0.00%
Tagalog (incl. Filipino)	0	0.00%	0.00%
Other Asian and Pacific Island languages	0	0.00%	0.00%
Arabic	0	0.00%	0.00%
Other and Unspecified	0	0.00%	0.00%
<b>Total LEP Population</b>	<b>288</b>	<b>3.48%</b>	
<b>Total Population</b>	<b>8,270</b>		

Mecklenburg County			
Language	Number of LEP Individuals (5+)	Percent of State Population	Percent of LEP Population
Spanish	641	2.22%	52.45%
French, Haitian, or Cajun	33	0.11%	2.70%
German or other West Germanic languages	83	0.29%	6.79%
Russian, Polish, or other Slavic languages	0	0.00%	0.00%
Other Indo-European	184	0.64%	15.06%
Korean	0	0.00%	0.00%
Chinese (Incl. Mandarin, Cantonese)	1	0.00%	0.08%
Vietnamese	0	0.00%	0.00%
Tagalog (incl. Filipino)	27	0.09%	2.21%
Other Asian and Pacific Island languages	128	0.44%	10.47%
Arabic	20	0.07%	1.64%
Other and Unspecified	105	0.36%	8.59%
<b>Total LEP Population</b>	<b>1,222</b>	<b>4.23%</b>	
<b>Total Population</b>	<b>28,866</b>		

Language	Number of LEP Individuals (5+)	Percent of State Population	Percent of LEP Population
Spanish	277	2.67%	57.35%
French, Haitian, or Cajun	18	0.17%	3.73%
German or other West Germanic languages	23	0.22%	4.76%
Russian, Polish, or other Slavic languages	53	0.51%	10.97%
Other Indo-European	50	0.48%	10.35%
Korean	7	0.07%	1.45%
Chinese (Incl. Mandarin, Cantonese)	12	0.12%	2.48%
Vietnamese	4	0.04%	0.83%
Tagalog (incl. Filipino)	0	0.00%	0.00%
Other Asian and Pacific Island languages	30	0.29%	6.21%
Arabic	9	0.09%	1.86%
Other and Unspecified	0	0.00%	0.00%
<b>Total LEP Population</b>	<b>483</b>	<b>4.66%</b>	
<b>Total Population</b>	<b>10,361</b>		

Montgomery County			
Language	Number of LEP Individuals (5+)	Percent of State Population	Percent of LEP Population
Spanish	2,401	2.51%	24.88%
French, Haitian, or Cajun	89	0.09%	0.92%
German or other West Germanic languages	308	0.32%	3.19%
Russian, Polish, or other Slavic languages	255	0.27%	2.64%
Other Indo-European	2,333	2.44%	24.18%
Korean	789	0.83%	8.18%
Chinese (Incl. Mandarin, Cantonese)	1,586	1.66%	16.44%
Vietnamese	202	0.21%	2.09%
Tagalog (incl. Filipino)	100	0.10%	1.04%
Other Asian and Pacific Island languages	619	0.65%	6.41%
Arabic	800	0.84%	8.29%
Other and Unspecified	168	0.18%	1.74%
<b>Total LEP Population</b>	<b>9,650</b>	<b>10.09%</b>	
<b>Total Population</b>	<b>95,611</b>		

Nelson County			
Language	Number of LEP Individuals (5+)	Percent of State Population	Percent of LEP Population
Spanish	443	3.15%	57.16%
French, Haitian, or Cajun	21	0.15%	2.71%
German or other West Germanic languages	0	0.00%	0.00%
Russian, Polish, or other Slavic languages	23	0.16%	2.97%
Other Indo-European	85	0.60%	10.97%
Korean	0	0.00%	0.00%
Chinese (Incl. Mandarin, Cantonese)	10	0.07%	1.29%
Vietnamese	0	0.00%	0.00%
Tagalog (incl. Filipino)	25	0.18%	3.23%
Other Asian and Pacific Island languages	4	0.03%	0.52%
Arabic	0	0.00%	0.00%
Other and Unspecified	164	1.17%	21.16%
<b>Total LEP Population</b>	<b>775</b>	<b>5.51%</b>	
<b>Total Population</b>	<b>14,074</b>		

New Kent County			
Language	Number of LEP Individuals (5+)	Percent of State Population	Percent of LEP Population
Spanish	613	2.75%	57.67%
French, Haitian, or Cajun	65	0.29%	6.11%
German or other West Germanic languages	15	0.07%	1.41%
Russian, Polish, or other Slavic languages	43	0.19%	4.05%
Other Indo-European	22	0.10%	2.07%
Korean	42	0.19%	3.95%
Chinese (Incl. Mandarin, Cantonese)	38	0.17%	3.57%
Vietnamese	40	0.18%	3.76%
Tagalog (incl. Filipino)	58	0.26%	5.46%
Other Asian and Pacific Island languages	4	0.02%	0.38%
Arabic	37	0.17%	3.48%
Other and Unspecified	86	0.39%	8.09%
<b>Total LEP Population</b>	<b>1,063</b>	<b>4.76%</b>	
<b>Total Population</b>	<b>22,331</b>		

Northampton County			
Language	Number of LEP Individuals (5+)	Percent of State Population	Percent of LEP Population
Spanish	798	6.89%	70.12%
French, Haitian, or Cajun	41	0.35%	3.60%
German or other West Germanic languages	42	0.36%	3.69%
Russian, Polish, or other Slavic languages	57	0.49%	5.01%
Other Indo-European	91	0.79%	8.00%
Korean	6	0.05%	0.53%
Chinese (Incl. Mandarin, Cantonese)	6	0.05%	0.53%
Vietnamese	0	0.00%	0.00%
Tagalog (incl. Filipino)	14	0.12%	1.23%
Other Asian and Pacific Island languages	83	0.72%	7.29%
Arabic	0	0.00%	0.00%
Other and Unspecified	0	0.00%	0.00%
<b>Total LEP Population</b>	<b>1,138</b>	<b>9.82%</b>	
<b>Total Population</b>	<b>11,585</b>		

Northumberland County			
Language	Number of LEP Individuals (5+)	Percent of State Population	Percent of LEP Population
Spanish	389	3.34%	58.23%
French, Haitian, or Cajun	62	0.53%	9.28%
German or other West Germanic languages	21	0.18%	3.14%
Russian, Polish, or other Slavic languages	0	0.00%	0.00%
Other Indo-European	117	1.01%	17.51%
Korean	0	0.00%	0.00%
Chinese (Incl. Mandarin, Cantonese)	0	0.00%	0.00%
Vietnamese	0	0.00%	0.00%
Tagalog (incl. Filipino)	0	0.00%	0.00%
Other Asian and Pacific Island languages	73	0.63%	10.93%
Arabic	0	0.00%	0.00%
Other and Unspecified	6	0.05%	0.90%
<b>Total LEP Population</b>	<b>668</b>	<b>5.74%</b>	
<b>Total Population</b>	<b>11,631</b>		

Nottoway County			
Language	Number of LEP Individuals (5+)	Percent of State Population	Percent of LEP Population
Spanish	649	4.37%	90.90%
French, Haitian, or Cajun	0	0.00%	0.00%
German or other West Germanic languages	0	0.00%	0.00%
Russian, Polish, or other Slavic languages	0	0.00%	0.00%
Other Indo-European	45	0.30%	6.30%
Korean	6	0.04%	0.84%
Chinese (Incl. Mandarin, Cantonese)	0	0.00%	0.00%
Vietnamese	0	0.00%	0.00%
Tagalog (incl. Filipino)	0	0.00%	0.00%
Other Asian and Pacific Island languages	10	0.07%	1.40%
Arabic	4	0.03%	0.56%
Other and Unspecified	0	0.00%	0.00%
<b>Total LEP Population</b>	<b>714</b>	<b>4.81%</b>	
<b>Total Population</b>	<b>14,856</b>		

Orange County			
Language	Number of LEP Individuals (5+)	Percent of State Population	Percent of LEP Population
Spanish	1,168	3.38%	52.07%
French, Haitian, or Cajun	292	0.84%	13.02%
German or other West Germanic languages	93	0.27%	4.15%
Russian, Polish, or other Slavic languages	104	0.30%	4.64%
Other Indo-European	430	1.24%	19.17%
Korean	10	0.03%	0.45%
Chinese (Incl. Mandarin, Cantonese)	0	0.00%	0.00%
Vietnamese	4	0.01%	0.18%
Tagalog (incl. Filipino)	69	0.20%	3.08%
Other Asian and Pacific Island languages	14	0.04%	0.62%
Arabic	8	0.02%	0.36%
Other and Unspecified	51	0.15%	2.27%
<b>Total LEP Population</b>	<b>2,243</b>	<b>6.49%</b>	
<b>Total Population</b>	<b>34,560</b>		

Page County			
Language	Number of LEP Individuals (5+)	Percent of State Population	Percent of LEP Population
Spanish	465	2.06%	66.91%
French, Haitian, or Cajun	37	0.16%	5.32%
German or other West Germanic languages	17	0.08%	2.45%
Russian, Polish, or other Slavic languages	0	0.00%	0.00%
Other Indo-European	0	0.00%	0.00%
Korean	0	0.00%	0.00%
Chinese (Incl. Mandarin, Cantonese)	7	0.03%	1.01%
Vietnamese	0	0.00%	0.00%
Tagalog (incl. Filipino)	34	0.15%	4.89%
Other Asian and Pacific Island languages	26	0.12%	3.74%
Arabic	109	0.48%	15.68%
Other and Unspecified	0	0.00%	0.00%
<b>Total LEP Population</b>	<b>695</b>	<b>3.08%</b>	
<b>Total Population</b>	<b>22,547</b>		

Patrick County			
Language	Number of LEP Individuals (5+)	Percent of State Population	Percent of LEP Population
Spanish	445	2.64%	73.43%
French, Haitian, or Cajun	17	0.10%	2.81%
German or other West Germanic languages	50	0.30%	8.25%
Russian, Polish, or other Slavic languages	0	0.00%	0.00%
Other Indo-European	8	0.05%	1.32%
Korean	0	0.00%	0.00%
Chinese (Incl. Mandarin, Cantonese)	55	0.33%	9.08%
Vietnamese	0	0.00%	0.00%
Tagalog (incl. Filipino)	0	0.00%	0.00%
Other Asian and Pacific Island languages	19	0.11%	3.14%
Arabic	0	0.00%	0.00%
Other and Unspecified	12	0.07%	1.98%
<b>Total LEP Population</b>	<b>606</b>	<b>3.59%</b>	
<b>Total Population</b>	<b>16,881</b>		

Pittsylvania County			
Language	Number of LEP Individuals (5+)	Percent of State Population	Percent of LEP Population
Spanish	1,198	2.06%	69.21%
French, Haitian, or Cajun	102	0.18%	5.89%
German or other West Germanic languages	74	0.13%	4.27%
Russian, Polish, or other Slavic languages	18	0.03%	1.04%
Other Indo-European	100	0.17%	5.78%
Korean	0	0.00%	0.00%
Chinese (Incl. Mandarin, Cantonese)	55	0.09%	3.18%
Vietnamese	0	0.00%	0.00%
Tagalog (incl. Filipino)	40	0.07%	2.31%
Other Asian and Pacific Island languages	85	0.15%	4.91%
Arabic	22	0.04%	1.27%
Other and Unspecified	37	0.06%	2.14%
<b>Total LEP Population</b>	<b>1,731</b>	<b>2.98%</b>	
<b>Total Population</b>	<b>58,053</b>		

Powhatan County			
Language	Number of LEP Individuals (5+)	Percent of State Population	Percent of LEP Population
Spanish	373	1.28%	34.51%
French, Haitian, or Cajun	228	0.78%	21.09%
German or other West Germanic languages	16	0.05%	1.48%
Russian, Polish, or other Slavic languages	18	0.06%	1.67%
Other Indo-European	96	0.33%	8.88%
Korean	0	0.00%	0.00%
Chinese (Incl. Mandarin, Cantonese)	0	0.00%	0.00%
Vietnamese	0	0.00%	0.00%
Tagalog (incl. Filipino)	0	0.00%	0.00%
Other Asian and Pacific Island languages	2	0.01%	0.19%
Arabic	196	0.67%	18.13%
Other and Unspecified	152	0.52%	14.06%
<b>Total LEP Population</b>	<b>1,081</b>	<b>3.70%</b>	
<b>Total Population</b>	<b>29,190</b>		

Prince Edward County			
Language	Number of LEP Individuals (5+)	Percent of State Population	Percent of LEP Population
Spanish	743	3.54%	75.05%
French, Haitian, or Cajun	26	0.12%	2.63%
German or other West Germanic languages	44	0.21%	4.44%
Russian, Polish, or other Slavic languages	11	0.05%	1.11%
Other Indo-European	43	0.20%	4.34%
Korean	34	0.16%	3.43%
Chinese (Incl. Mandarin, Cantonese)	36	0.17%	3.64%
Vietnamese	2	0.01%	0.20%
Tagalog (incl. Filipino)	0	0.00%	0.00%
Other Asian and Pacific Island languages	38	0.18%	3.84%
Arabic	1	0.00%	0.10%
Other and Unspecified	12	0.06%	1.21%
<b>Total LEP Population</b>	<b>990</b>	<b>4.72%</b>	
<b>Total Population</b>	<b>20,994</b>		

Prince George County			
Language	Number of LEP Individuals (5+)	Percent of State Population	Percent of LEP Population
Spanish	2,008	4.95%	51.61%
French, Haitian, or Cajun	299	0.74%	7.68%
German or other West Germanic languages	430	1.06%	11.05%
Russian, Polish, or other Slavic languages	27	0.07%	0.69%
Other Indo-European	246	0.61%	6.32%
Korean	145	0.36%	3.73%
Chinese (Incl. Mandarin, Cantonese)	8	0.02%	0.21%
Vietnamese	27	0.07%	0.69%
Tagalog (incl. Filipino)	91	0.22%	2.34%
Other Asian and Pacific Island languages	251	0.62%	6.45%
Arabic	156	0.38%	4.01%
Other and Unspecified	203	0.50%	5.22%
<b>Total LEP Population</b>	<b>3,891</b>	<b>9.60%</b>	
<b>Total Population</b>	<b>40,535</b>		

Prince William County			
Language	Number of LEP Individuals (5+)	Percent of State Population	Percent of LEP Population
Spanish	88,321	19.71%	55.28%
French, Haitian, or Cajun	2,680	0.60%	1.68%
German or other West Germanic languages	1,234	0.28%	0.77%
Russian, Polish, or other Slavic languages	1,742	0.39%	1.09%
Other Indo-European	23,418	5.23%	14.66%
Korean	4,359	0.97%	2.73%
Chinese (Incl. Mandarin, Cantonese)	1,909	0.43%	1.19%
Vietnamese	4,051	0.90%	2.54%
Tagalog (incl. Filipino)	3,902	0.87%	2.44%
Other Asian and Pacific Island languages	5,071	1.13%	3.17%
Arabic	5,977	1.33%	3.74%
Other and Unspecified	17,107	3.82%	10.71%
<b>Total LEP Population</b>	<b>159,771</b>	<b>35.66%</b>	
<b>Total Population</b>	<b>448,067</b>		

Pulaski County			
Language	Number of LEP Individuals (5+)	Percent of State Population	Percent of LEP Population
Spanish	550	1.70%	53.92%
French, Haitian, or Cajun	34	0.11%	3.33%
German or other West Germanic languages	132	0.41%	12.94%
Russian, Polish, or other Slavic languages	0	0.00%	0.00%
Other Indo-European	59	0.18%	5.78%
Korean	49	0.15%	4.80%
Chinese (Incl. Mandarin, Cantonese)	35	0.11%	3.43%
Vietnamese	28	0.09%	2.75%
Tagalog (incl. Filipino)	0	0.00%	0.00%
Other Asian and Pacific Island languages	6	0.02%	0.59%
Arabic	31	0.10%	3.04%
Other and Unspecified	96	0.30%	9.41%
<b>Total LEP Population</b>	<b>1,020</b>	<b>3.16%</b>	
<b>Total Population</b>	<b>32,282</b>		

Rappahannock County			
Language	Number of LEP Individuals (5+)	Percent of State Population	Percent of LEP Population
Spanish	204	2.86%	73.38%
French, Haitian, or Cajun	6	0.08%	2.16%
German or other West Germanic languages	13	0.18%	4.68%
Russian, Polish, or other Slavic languages	0	0.00%	0.00%
Other Indo-European	28	0.39%	10.07%
Korean	0	0.00%	0.00%
Chinese (Incl. Mandarin, Cantonese)	0	0.00%	0.00%
Vietnamese	0	0.00%	0.00%
Tagalog (incl. Filipino)	0	0.00%	0.00%
Other Asian and Pacific Island languages	20	0.28%	7.19%
Arabic	7	0.10%	2.52%
Other and Unspecified	0	0.00%	0.00%
<b>Total LEP Population</b>	<b>278</b>	<b>3.90%</b>	
<b>Total Population</b>	<b>7,126</b>		

Richmond County			
Language	Number of LEP Individuals (5+)	Percent of State Population	Percent of LEP Population
Spanish	377	4.45%	93.55%
French, Haitian, or Cajun	0	0.00%	0.00%
German or other West Germanic languages	6	0.07%	1.49%
Russian, Polish, or other Slavic languages	11	0.13%	2.73%
Other Indo-European	5	0.06%	1.24%
Korean	0	0.00%	0.00%
Chinese (Incl. Mandarin, Cantonese)	0	0.00%	0.00%
Vietnamese	0	0.00%	0.00%
Tagalog (incl. Filipino)	0	0.00%	0.00%
Other Asian and Pacific Island languages	0	0.00%	0.00%
Arabic	3	0.04%	0.74%
Other and Unspecified	1	0.01%	0.25%
<b>Total LEP Population</b>	<b>403</b>	<b>4.76%</b>	
<b>Total Population</b>	<b>8,467</b>		

Roanoke County			
Language	Number of LEP Individuals (5+)	Percent of State Population	Percent of LEP Population
Spanish	2,716	2.94%	37.62%
French, Haitian, or Cajun	170	0.18%	2.35%
German or other West Germanic languages	121	0.13%	1.68%
Russian, Polish, or other Slavic languages	445	0.48%	6.16%
Other Indo-European	1,554	1.68%	21.53%
Korean	33	0.04%	0.46%
Chinese (Incl. Mandarin, Cantonese)	464	0.50%	6.43%
Vietnamese	401	0.43%	5.55%
Tagalog (incl. Filipino)	29	0.03%	0.40%
Other Asian and Pacific Island languages	1,041	1.13%	14.42%
Arabic	111	0.12%	1.54%
Other and Unspecified	134	0.15%	1.86%
<b>Total LEP Population</b>	<b>7,219</b>	<b>7.83%</b>	
<b>Total Population</b>	<b>92,250</b>		

Rockbridge County			
Language	Number of LEP Individuals (5+)	Percent of State Population	Percent of LEP Population
Spanish	280	1.29%	50.09%
French, Haitian, or Cajun	15	0.07%	2.68%
German or other West Germanic languages	44	0.20%	7.87%
Russian, Polish, or other Slavic languages	61	0.28%	10.91%
Other Indo-European	0	0.00%	0.00%
Korean	69	0.32%	12.34%
Chinese (Incl. Mandarin, Cantonese)	0	0.00%	0.00%
Vietnamese	0	0.00%	0.00%
Tagalog (incl. Filipino)	35	0.16%	6.26%
Other Asian and Pacific Island languages	0	0.00%	0.00%
Arabic	20	0.09%	3.58%
Other and Unspecified	35	0.16%	6.26%
<b>Total LEP Population</b>	<b>559</b>	<b>2.57%</b>	
<b>Total Population</b>	<b>21,768</b>		

Rockingham County			
Language	Number of LEP Individuals (5+)	Percent of State Population	Percent of LEP Population
Spanish	4,948	6.25%	64.42%
French, Haitian, or Cajun	152	0.19%	1.98%
German or other West Germanic languages	198	0.25%	2.58%
Russian, Polish, or other Slavic languages	812	1.03%	10.57%
Other Indo-European	583	0.74%	7.59%
Korean	0	0.00%	0.00%
Chinese (Incl. Mandarin, Cantonese)	25	0.03%	0.33%
Vietnamese	199	0.25%	2.59%
Tagalog (incl. Filipino)	22	0.03%	0.29%
Other Asian and Pacific Island languages	65	0.08%	0.85%
Arabic	394	0.50%	5.13%
Other and Unspecified	283	0.36%	3.68%
<b>Total LEP Population</b>	<b>7,681</b>	<b>9.70%</b>	
<b>Total Population</b>	<b>79,194</b>		

Russell County			
Language	Number of LEP Individuals (5+)	Percent of State Population	Percent of LEP Population
Spanish	122	0.50%	44.85%
French, Haitian, or Cajun	53	0.22%	19.49%
German or other West Germanic languages	49	0.20%	18.01%
Russian, Polish, or other Slavic languages	0	0.00%	0.00%
Other Indo-European	1	0.00%	0.37%
Korean	0	0.00%	0.00%
Chinese (Incl. Mandarin, Cantonese)	0	0.00%	0.00%
Vietnamese	0	0.00%	0.00%
Tagalog (incl. Filipino)	0	0.00%	0.00%
Other Asian and Pacific Island languages	34	0.14%	12.50%
Arabic	13	0.05%	4.78%
Other and Unspecified	0	0.00%	0.00%
<b>Total LEP Population</b>	<b>272</b>	<b>1.11%</b>	
<b>Total Population</b>	<b>24,579</b>		

Scott County			
Language	Number of LEP Individuals (5+)	Percent of State Population	Percent of LEP Population
Spanish	48	0.23%	30.57%
French, Haitian, or Cajun	14	0.07%	8.92%
German or other West Germanic languages	21	0.10%	13.38%
Russian, Polish, or other Slavic languages	12	0.06%	7.64%
Other Indo-European	5	0.02%	3.18%
Korean	0	0.00%	0.00%
Chinese (Incl. Mandarin, Cantonese)	0	0.00%	0.00%
Vietnamese	0	0.00%	0.00%
Tagalog (incl. Filipino)	17	0.08%	10.83%
Other Asian and Pacific Island languages	23	0.11%	14.65%
Arabic	0	0.00%	0.00%
Other and Unspecified	17	0.08%	10.83%
<b>Total LEP Population</b>	<b>157</b>	<b>0.76%</b>	
<b>Total Population</b>	<b>20,719</b>		

Shenandoah County			
Language	Number of LEP Individuals (5+)	Percent of State Population	Percent of LEP Population
Spanish	2,802	6.70%	72.97%
French, Haitian, or Cajun	248	0.59%	6.46%
German or other West Germanic languages	39	0.09%	1.02%
Russian, Polish, or other Slavic languages	56	0.13%	1.46%
Other Indo-European	218	0.52%	5.68%
Korean	194	0.46%	5.05%
Chinese (Incl. Mandarin, Cantonese)	0	0.00%	0.00%
Vietnamese	14	0.03%	0.36%
Tagalog (incl. Filipino)	0	0.00%	0.00%
Other Asian and Pacific Island languages	34	0.08%	0.89%
Arabic	18	0.04%	0.47%
Other and Unspecified	217	0.52%	5.65%
<b>Total LEP Population</b>	<b>3,840</b>	<b>9.18%</b>	
<b>Total Population</b>	<b>41,826</b>		

Smyth County			
Language	Number of LEP Individuals (5+)	Percent of State Population	Percent of LEP Population
Spanish	477	1.68%	74.07%
French, Haitian, or Cajun	44	0.15%	6.83%
German or other West Germanic languages	30	0.11%	4.66%
Russian, Polish, or other Slavic languages	0	0.00%	0.00%
Other Indo-European	59	0.21%	9.16%
Korean	5	0.02%	0.78%
Chinese (Incl. Mandarin, Cantonese)	0	0.00%	0.00%
Vietnamese	0	0.00%	0.00%
Tagalog (incl. Filipino)	0	0.00%	0.00%
Other Asian and Pacific Island languages	6	0.02%	0.93%
Arabic	2	0.01%	0.31%
Other and Unspecified	21	0.07%	3.26%
<b>Total LEP Population</b>	<b>644</b>	<b>2.26%</b>	
<b>Total Population</b>	<b>28,471</b>		

Southampton County			
Language	Number of LEP Individuals (5+)	Percent of State Population	Percent of LEP Population
Spanish	250	1.46%	56.18%
French, Haitian, or Cajun	7	0.04%	1.57%
German or other West Germanic languages	96	0.56%	21.57%
Russian, Polish, or other Slavic languages	3	0.02%	0.67%
Other Indo-European	71	0.41%	15.96%
Korean	0	0.00%	0.00%
Chinese (Incl. Mandarin, Cantonese)	0	0.00%	0.00%
Vietnamese	3	0.02%	0.67%
Tagalog (incl. Filipino)	0	0.00%	0.00%
Other Asian and Pacific Island languages	15	0.09%	3.37%
Arabic	0	0.00%	0.00%
Other and Unspecified	0	0.00%	0.00%
<b>Total LEP Population</b>	<b>445</b>	<b>2.60%</b>	
<b>Total Population</b>	<b>17,146</b>		

Spotsylvania County			
Language	Number of LEP Individuals (5+)	Percent of State Population	Percent of LEP Population
Spanish	10,814	8.15%	66.11%
French, Haitian, or Cajun	525	0.40%	3.21%
German or other West Germanic languages	346	0.26%	2.12%
Russian, Polish, or other Slavic languages	270	0.20%	1.65%
Other Indo-European	1,476	1.11%	9.02%
Korean	333	0.25%	2.04%
Chinese (Incl. Mandarin, Cantonese)	500	0.38%	3.06%
Vietnamese	279	0.21%	1.71%
Tagalog (incl. Filipino)	232	0.17%	1.42%
Other Asian and Pacific Island languages	483	0.36%	2.95%
Arabic	501	0.38%	3.06%
Other and Unspecified	598	0.45%	3.66%
<b>Total LEP Population</b>	<b>16,357</b>	<b>12.32%</b>	
<b>Total Population</b>	<b>132,730</b>		

Stafford County			
Language	Number of LEP Individuals (5+)	Percent of State Population	Percent of LEP Population
Spanish	15,692	10.61%	61.79%
French, Haitian, or Cajun	1,232	0.83%	4.85%
German or other West Germanic languages	535	0.36%	2.11%
Russian, Polish, or other Slavic languages	271	0.18%	1.07%
Other Indo-European	2,801	1.89%	11.03%
Korean	836	0.57%	3.29%
Chinese (Incl. Mandarin, Cantonese)	273	0.18%	1.07%
Vietnamese	170	0.11%	0.67%
Tagalog (incl. Filipino)	716	0.48%	2.82%
Other Asian and Pacific Island languages	558	0.38%	2.20%
Arabic	547	0.37%	2.15%
Other and Unspecified	1,765	1.19%	6.95%
<b>Total LEP Population</b>	<b>25,396</b>	<b>17.18%</b>	
<b>Total Population</b>	<b>147,848</b>		

Surry County			
Language	Number of LEP Individuals (5+)	Percent of State Population	Percent of LEP Population
Spanish	81	1.30%	89.01%
French, Haitian, or Cajun	0	0.00%	0.00%
German or other West Germanic languages	2	0.03%	2.20%
Russian, Polish, or other Slavic languages	0	0.00%	0.00%
Other Indo-European	0	0.00%	0.00%
Korean	0	0.00%	0.00%
Chinese (Incl. Mandarin, Cantonese)	8	0.13%	8.79%
Vietnamese	0	0.00%	0.00%
Tagalog (incl. Filipino)	0	0.00%	0.00%
Other Asian and Pacific Island languages	0	0.00%	0.00%
Arabic	0	0.00%	0.00%
Other and Unspecified	0	0.00%	0.00%
<b>Total LEP Population</b>	<b>91</b>	<b>1.46%</b>	
<b>Total Population</b>	<b>6,223</b>		

Sussex County			
Language	Number of LEP Individuals (5+)	Percent of State Population	Percent of LEP Population
Spanish	216	2.07%	88.16%
French, Haitian, or Cajun	7	0.07%	2.86%
German or other West Germanic languages	6	0.06%	2.45%
Russian, Polish, or other Slavic languages	0	0.00%	0.00%
Other Indo-European	8	0.08%	3.27%
Korean	1	0.01%	0.41%
Chinese (Incl. Mandarin, Cantonese)	0	0.00%	0.00%
Vietnamese	0	0.00%	0.00%
Tagalog (incl. Filipino)	6	0.06%	2.45%
Other Asian and Pacific Island languages	1	0.01%	0.41%
Arabic	0	0.00%	0.00%
Other and Unspecified	0	0.00%	0.00%
<b>Total LEP Population</b>	<b>245</b>	<b>2.35%</b>	
<b>Total Population</b>	<b>10,416</b>		

Tazewell County			
Language	Number of LEP Individuals (5+)	Percent of State Population	Percent of LEP Population
Spanish	208	0.54%	35.80%
French, Haitian, or Cajun	23	0.06%	3.96%
German or other West Germanic languages	33	0.09%	5.68%
Russian, Polish, or other Slavic languages	21	0.05%	3.61%
Other Indo-European	104	0.27%	17.90%
Korean	0	0.00%	0.00%
Chinese (Incl. Mandarin, Cantonese)	98	0.25%	16.87%
Vietnamese	0	0.00%	0.00%
Tagalog (incl. Filipino)	0	0.00%	0.00%
Other Asian and Pacific Island languages	18	0.05%	3.10%
Arabic	58	0.15%	9.98%
Other and Unspecified	18	0.05%	3.10%
<b>Total LEP Population</b>	<b>581</b>	<b>1.51%</b>	
<b>Total Population</b>	<b>38,444</b>		

Warren County			
Language	Number of LEP Individuals (5+)	Percent of State Population	Percent of LEP Population
Spanish	1,640	4.25%	66.13%
French, Haitian, or Cajun	29	0.08%	1.17%
German or other West Germanic languages	123	0.32%	4.96%
Russian, Polish, or other Slavic languages	23	0.06%	0.93%
Other Indo-European	372	0.96%	15.00%
Korean	69	0.18%	2.78%
Chinese (Incl. Mandarin, Cantonese)	0	0.00%	0.00%
Vietnamese	6	0.02%	0.24%
Tagalog (incl. Filipino)	63	0.16%	2.54%
Other Asian and Pacific Island languages	95	0.25%	3.83%
Arabic	25	0.06%	1.01%
Other and Unspecified	35	0.09%	1.41%
<b>Total LEP Population</b>	<b>2,480</b>	<b>6.43%</b>	
<b>Total Population</b>	<b>38,567</b>		

Washington County			
Language	Number of LEP Individuals (5+)	Percent of State Population	Percent of LEP Population
Spanish	889	1.71%	61.78%
French, Haitian, or Cajun	68	0.13%	4.73%
German or other West Germanic languages	35	0.07%	2.43%
Russian, Polish, or other Slavic languages	21	0.04%	1.46%
Other Indo-European	147	0.28%	10.22%
Korean	7	0.01%	0.49%
Chinese (Incl. Mandarin, Cantonese)	12	0.02%	0.83%
Vietnamese	98	0.19%	6.81%
Tagalog (incl. Filipino)	6	0.01%	0.42%
Other Asian and Pacific Island languages	20	0.04%	1.39%
Arabic	126	0.24%	8.76%
Other and Unspecified	10	0.02%	0.69%
<b>Total LEP Population</b>	<b>1,439</b>	<b>2.77%</b>	
<b>Total Population</b>	<b>51,874</b>		

Westmoreland County			
Language	Number of LEP Individuals (5+)	Percent of State Population	Percent of LEP Population
Spanish	948	5.39%	76.08%
French, Haitian, or Cajun	14	0.08%	1.12%
German or other West Germanic languages	123	0.70%	9.87%
Russian, Polish, or other Slavic languages	6	0.03%	0.48%
Other Indo-European	28	0.16%	2.25%
Korean	2	0.01%	0.16%
Chinese (Incl. Mandarin, Cantonese)	63	0.36%	5.06%
Vietnamese	51	0.29%	4.09%
Tagalog (incl. Filipino)	0	0.00%	0.00%
Other Asian and Pacific Island languages	0	0.00%	0.00%
Arabic	1	0.01%	0.08%
Other and Unspecified	10	0.06%	0.80%
<b>Total LEP Population</b>	<b>1,246</b>	<b>7.08%</b>	
<b>Total Population</b>	<b>17,594</b>		

Wise County			
Language	Number of LEP Individuals (5+)	Percent of State Population	Percent of LEP Population
Spanish	384	1.11%	47.94%
French, Haitian, or Cajun	20	0.06%	2.50%
German or other West Germanic languages	49	0.14%	6.12%
Russian, Polish, or other Slavic languages	0	0.00%	0.00%
Other Indo-European	225	0.65%	28.09%
Korean	6	0.02%	0.75%
Chinese (Incl. Mandarin, Cantonese)	22	0.06%	2.75%
Vietnamese	4	0.01%	0.50%
Tagalog (incl. Filipino)	0	0.00%	0.00%
Other Asian and Pacific Island languages	18	0.05%	2.25%
Arabic	46	0.13%	5.74%
Other and Unspecified	27	0.08%	3.37%
<b>Total LEP Population</b>	<b>801</b>	<b>2.32%</b>	
<b>Total Population</b>	<b>34,497</b>		

Wythe County			
Language	Number of LEP Individuals (5+)	Percent of State Population	Percent of LEP Population
Spanish	246	0.91%	50.72%
French, Haitian, or Cajun	9	0.03%	1.86%
German or other West Germanic languages	0	0.00%	0.00%
Russian, Polish, or other Slavic languages	20	0.07%	4.12%
Other Indo-European	140	0.52%	28.87%
Korean	0	0.00%	0.00%
Chinese (Incl. Mandarin, Cantonese)	30	0.11%	6.19%
Vietnamese	13	0.05%	2.68%
Tagalog (incl. Filipino)	0	0.00%	0.00%
Other Asian and Pacific Island languages	19	0.07%	3.92%
Arabic	0	0.00%	0.00%
Other and Unspecified	8	0.03%	1.65%
<b>Total LEP Population</b>	<b>485</b>	<b>1.80%</b>	
<b>Total Population</b>	<b>26,899</b>		

York County			
Language	Number of LEP Individuals (5+)	Percent of State Population	Percent of LEP Population
Spanish	2,542	3.82%	34.51%
French, Haitian, or Cajun	244	0.37%	3.31%
German or other West Germanic languages	432	0.65%	5.87%
Russian, Polish, or other Slavic languages	316	0.48%	4.29%
Other Indo-European	1,081	1.63%	14.68%
Korean	668	1.00%	9.07%
Chinese (Incl. Mandarin, Cantonese)	841	1.26%	11.42%
Vietnamese	200	0.30%	2.72%
Tagalog (incl. Filipino)	295	0.44%	4.01%
Other Asian and Pacific Island languages	460	0.69%	6.25%
Arabic	43	0.06%	0.58%
Other and Unspecified	243	0.37%	3.30%
<b>Total LEP Population</b>	<b>7,365</b>	<b>11.07%</b>	
<b>Total Population</b>	<b>66,518</b>		

Alexandria City			
Language	Number of LEP Individuals (5+)	Percent of State Population	Percent of LEP Population
Spanish	18,845	12.84%	42.71%
French, Haitian, or Cajun	2,305	1.57%	5.22%
German or other West Germanic languages	822	0.56%	1.86%
Russian, Polish, or other Slavic languages	1,287	0.88%	2.92%
Other Indo-European	4,671	3.18%	10.59%
Korean	685	0.47%	1.55%
Chinese (Incl. Mandarin, Cantonese)	698	0.48%	1.58%
Vietnamese	254	0.17%	0.58%
Tagalog (incl. Filipino)	929	0.63%	2.11%
Other Asian and Pacific Island languages	1,550	1.06%	3.51%
Arabic	3,313	2.26%	7.51%
Other and Unspecified	8,769	5.97%	19.87%
<b>Total LEP Population</b>	<b>44,128</b>	<b>30.06%</b>	
<b>Total Population</b>	<b>146,804</b>		

Bristol City			
Language	Number of LEP Individuals (5+)	Percent of State Population	Percent of LEP Population
Spanish	299	1.85%	67.80%
French, Haitian, or Cajun	53	0.33%	12.02%
German or other West Germanic languages	1	0.01%	0.23%
Russian, Polish, or other Slavic languages	0	0.00%	0.00%
Other Indo-European	20	0.12%	4.54%
Korean	1	0.01%	0.23%
Chinese (Incl. Mandarin, Cantonese)	1	0.01%	0.23%
Vietnamese	1	0.01%	0.23%
Tagalog (incl. Filipino)	1	0.01%	0.23%
Other Asian and Pacific Island languages	3	0.02%	0.68%
Arabic	42	0.26%	9.52%
Other and Unspecified	19	0.12%	4.31%
<b>Total LEP Population</b>	<b>441</b>	<b>2.73%</b>	
<b>Total Population</b>	<b>16,169</b>		

Buena Vista City			
Language	Number of LEP Individuals (5+)	Percent of State Population	Percent of LEP Population
Spanish	68	1.08%	66.67%
French, Haitian, or Cajun	0	0.00%	0.00%
German or other West Germanic languages	0	0.00%	0.00%
Russian, Polish, or other Slavic languages	0	0.00%	0.00%
Other Indo-European	17	0.27%	16.67%
Korean	0	0.00%	0.00%
Chinese (Incl. Mandarin, Cantonese)	0	0.00%	0.00%
Vietnamese	17	0.27%	16.67%
Tagalog (incl. Filipino)	0	0.00%	0.00%
Other Asian and Pacific Island languages	0	0.00%	0.00%
Arabic	0	0.00%	0.00%
Other and Unspecified	0	0.00%	0.00%
<b>Total LEP Population</b>	<b>102</b>	<b>1.62%</b>	
<b>Total Population</b>	<b>6,312</b>		

Charlottesville City			
Language	Number of LEP Individuals (5+)	Percent of State Population	Percent of LEP Population
Spanish	1,620	3.69%	27.14%
French, Haitian, or Cajun	391	0.89%	6.55%
German or other West Germanic languages	120	0.27%	2.01%
Russian, Polish, or other Slavic languages	219	0.50%	3.67%
Other Indo-European	960	2.19%	16.08%
Korean	177	0.40%	2.96%
Chinese (Incl. Mandarin, Cantonese)	918	2.09%	15.38%
Vietnamese	102	0.23%	1.71%
Tagalog (incl. Filipino)	16	0.04%	0.27%
Other Asian and Pacific Island languages	634	1.44%	10.62%
Arabic	581	1.32%	9.73%
Other and Unspecified	232	0.53%	3.89%
<b>Total LEP Population</b>	<b>5,970</b>	<b>13.61%</b>	
<b>Total Population</b>	<b>43,880</b>		

Chesapeake City			
Language	Number of LEP Individuals (5+)	Percent of State Population	Percent of LEP Population
Spanish	8,721	3.72%	44.09%
French, Haitian, or Cajun	1,861	0.79%	9.41%
German or other West Germanic languages	882	0.38%	4.46%
Russian, Polish, or other Slavic languages	291	0.12%	1.47%
Other Indo-European	1,773	0.76%	8.96%
Korean	978	0.42%	4.94%
Chinese (Incl. Mandarin, Cantonese)	564	0.24%	2.85%
Vietnamese	752	0.32%	3.80%
Tagalog (incl. Filipino)	1,776	0.76%	8.98%
Other Asian and Pacific Island languages	842	0.36%	4.26%
Arabic	276	0.12%	1.40%
Other and Unspecified	1,066	0.46%	5.39%
<b>Total LEP Population</b>	<b>19,782</b>	<b>8.45%</b>	
<b>Total Population</b>	<b>234,138</b>		

Colonial Heights City			
Language	Number of LEP Individuals (5+)	Percent of State Population	Percent of LEP Population
Spanish	683	4.02%	48.34%
French, Haitian, or Cajun	17	0.10%	1.20%
German or other West Germanic languages	124	0.73%	8.78%
Russian, Polish, or other Slavic languages	0	0.00%	0.00%
Other Indo-European	162	0.95%	11.46%
Korean	57	0.34%	4.03%
Chinese (Incl. Mandarin, Cantonese)	243	1.43%	17.20%
Vietnamese	28	0.16%	1.98%
Tagalog (incl. Filipino)	16	0.09%	1.13%
Other Asian and Pacific Island languages	20	0.12%	1.42%
Arabic	61	0.36%	4.32%
Other and Unspecified	2	0.01%	0.14%
<b>Total LEP Population</b>	<b>1,413</b>	<b>8.32%</b>	
<b>Total Population</b>	<b>16,991</b>		

Covington City			
Language	Number of LEP Individuals (5+)	Percent of State Population	Percent of LEP Population
Spanish	49	0.91%	35.00%
French, Haitian, or Cajun	23	0.43%	16.43%
German or other West Germanic languages	4	0.07%	2.86%
Russian, Polish, or other Slavic languages	0	0.00%	0.00%
Other Indo-European	0	0.00%	0.00%
Korean	22	0.41%	15.71%
Chinese (Incl. Mandarin, Cantonese)	9	0.17%	6.43%
Vietnamese	0	0.00%	0.00%
Tagalog (incl. Filipino)	33	0.61%	23.57%
Other Asian and Pacific Island languages	0	0.00%	0.00%
Arabic	0	0.00%	0.00%
Other and Unspecified	0	0.00%	0.00%
<b>Total LEP Population</b>	<b>140</b>	<b>2.61%</b>	
<b>Total Population</b>	<b>5,373</b>		

Danville City			
Language	Number of LEP Individuals (5+)	Percent of State Population	Percent of LEP Population
Spanish	1,513	3.77%	68.99%
French, Haitian, or Cajun	15	0.04%	0.68%
German or other West Germanic languages	18	0.04%	0.82%
Russian, Polish, or other Slavic languages	38	0.09%	1.73%
Other Indo-European	373	0.93%	17.01%
Korean	13	0.03%	0.59%
Chinese (Incl. Mandarin, Cantonese)	33	0.08%	1.50%
Vietnamese	99	0.25%	4.51%
Tagalog (incl. Filipino)	55	0.14%	2.51%
Other Asian and Pacific Island languages	27	0.07%	1.23%
Arabic	0	0.00%	0.00%
Other and Unspecified	9	0.02%	0.41%
<b>Total LEP Population</b>	<b>2,193</b>	<b>5.47%</b>	
<b>Total Population</b>	<b>40,091</b>		

Emporia City			
Language	Number of LEP Individuals (5+)	Percent of State Population	Percent of LEP Population
Spanish	227	4.22%	78.82%
French, Haitian, or Cajun	8	0.15%	2.78%
German or other West Germanic languages	0	0.00%	0.00%
Russian, Polish, or other Slavic languages	0	0.00%	0.00%
Other Indo-European	9	0.17%	3.13%
Korean	0	0.00%	0.00%
Chinese (Incl. Mandarin, Cantonese)	0	0.00%	0.00%
Vietnamese	0	0.00%	0.00%
Tagalog (incl. Filipino)	0	0.00%	0.00%
Other Asian and Pacific Island languages	44	0.82%	15.28%
Arabic	0	0.00%	0.00%
Other and Unspecified	0	0.00%	0.00%
<b>Total LEP Population</b>	<b>288</b>	<b>5.36%</b>	
<b>Total Population</b>	<b>5,378</b>		

Fairfax City			
Language	Number of LEP Individuals (5+)	Percent of State Population	Percent of LEP Population
Spanish	3,570	15.89%	44.05%
French, Haitian, or Cajun	159	0.71%	1.96%
German or other West Germanic languages	68	0.30%	0.84%
Russian, Polish, or other Slavic languages	143	0.64%	1.76%
Other Indo-European	875	3.89%	10.80%
Korean	701	3.12%	8.65%
Chinese (Incl. Mandarin, Cantonese)	633	2.82%	7.81%
Vietnamese	637	2.84%	7.86%
Tagalog (incl. Filipino)	317	1.41%	3.91%
Other Asian and Pacific Island languages	456	2.03%	5.63%
Arabic	419	1.87%	5.17%
Other and Unspecified	126	0.56%	1.55%
<b>Total LEP Population</b>	<b>8,104</b>	<b>36.07%</b>	
<b>Total Population</b>	<b>22,466</b>		

Falls Church City			
Language	Number of LEP Individuals (5+)	Percent of State Population	Percent of LEP Population
Spanish	906	6.53%	32.58%
French, Haitian, or Cajun	118	0.85%	4.24%
German or other West Germanic languages	100	0.72%	3.60%
Russian, Polish, or other Slavic languages	128	0.92%	4.60%
Other Indo-European	524	3.78%	18.84%
Korean	118	0.85%	4.24%
Chinese (Incl. Mandarin, Cantonese)	134	0.97%	4.82%
Vietnamese	85	0.61%	3.06%
Tagalog (incl. Filipino)	193	1.39%	6.94%
Other Asian and Pacific Island languages	285	2.05%	10.25%
Arabic	140	1.01%	5.03%
Other and Unspecified	50	0.36%	1.80%
<b>Total LEP Population</b>	<b>2,781</b>	<b>20.05%</b>	
<b>Total Population</b>	<b>13,871</b>		

Franklin City			
Language	Number of LEP Individuals (5+)	Percent of State Population	Percent of LEP Population
Spanish	173	2.28%	38.27%
French, Haitian, or Cajun	3	0.04%	0.66%
German or other West Germanic languages	0	0.00%	0.00%
Russian, Polish, or other Slavic languages	25	0.33%	5.53%
Other Indo-European	183	2.41%	40.49%
Korean	0	0.00%	0.00%
Chinese (Incl. Mandarin, Cantonese)	0	0.00%	0.00%
Vietnamese	18	0.24%	3.98%
Tagalog (incl. Filipino)	0	0.00%	0.00%
Other Asian and Pacific Island languages	0	0.00%	0.00%
Arabic	0	0.00%	0.00%
Other and Unspecified	50	0.66%	11.06%
<b>Total LEP Population</b>	<b>452</b>	<b>5.96%</b>	
<b>Total Population</b>	<b>7,586</b>		

Fredericksburg City			
Language	Number of LEP Individuals (5+)	Percent of State Population	Percent of LEP Population
Spanish	2,165	8.16%	50.85%
French, Haitian, or Cajun	55	0.21%	1.29%
German or other West Germanic languages	257	0.97%	6.04%
Russian, Polish, or other Slavic languages	77	0.29%	1.81%
Other Indo-European	1,270	4.79%	29.83%
Korean	45	0.17%	1.06%
Chinese (Incl. Mandarin, Cantonese)	9	0.03%	0.21%
Vietnamese	65	0.24%	1.53%
Tagalog (incl. Filipino)	9	0.03%	0.21%
Other Asian and Pacific Island languages	32	0.12%	0.75%
Arabic	62	0.23%	1.46%
Other and Unspecified	212	0.80%	4.98%
<b>Total LEP Population</b>	<b>4,258</b>	<b>16.05%</b>	
<b>Total Population</b>	<b>26,535</b>		

Galax City			
Language	Number of LEP Individuals (5+)	Percent of State Population	Percent of LEP Population
Spanish	1,001	16.08%	95.06%
French, Haitian, or Cajun	0	0.00%	0.00%
German or other West Germanic languages	0	0.00%	0.00%
Russian, Polish, or other Slavic languages	31	0.50%	2.94%
Other Indo-European	0	0.00%	0.00%
Korean	0	0.00%	0.00%
Chinese (Incl. Mandarin, Cantonese)	0	0.00%	0.00%
Vietnamese	0	0.00%	0.00%
Tagalog (incl. Filipino)	13	0.21%	1.23%
Other Asian and Pacific Island languages	0	0.00%	0.00%
Arabic	0	0.00%	0.00%
Other and Unspecified	8	0.13%	0.76%
<b>Total LEP Population</b>	<b>1,053</b>	<b>16.91%</b>	
<b>Total Population</b>	<b>6,227</b>		

Hampton City			
Language	Number of LEP Individuals (5+)	Percent of State Population	Percent of LEP Population
Spanish	4,647	3.61%	50.17%
French, Haitian, or Cajun	487	0.38%	5.26%
German or other West Germanic languages	518	0.40%	5.59%
Russian, Polish, or other Slavic languages	155	0.12%	1.67%
Other Indo-European	346	0.27%	3.74%
Korean	226	0.18%	2.44%
Chinese (Incl. Mandarin, Cantonese)	74	0.06%	0.80%
Vietnamese	392	0.30%	4.23%
Tagalog (incl. Filipino)	693	0.54%	7.48%
Other Asian and Pacific Island languages	475	0.37%	5.13%
Arabic	635	0.49%	6.86%
Other and Unspecified	615	0.48%	6.64%
<b>Total LEP Population</b>	<b>9,263</b>	<b>7.19%</b>	
<b>Total Population</b>	<b>128,889</b>		

Harrisonburg City			
Language	Number of LEP Individuals (5+)	Percent of State Population	Percent of LEP Population
Spanish	8,557	17.36%	64.86%
French, Haitian, or Cajun	440	0.89%	3.34%
German or other West Germanic languages	233	0.47%	1.77%
Russian, Polish, or other Slavic languages	486	0.99%	3.68%
Other Indo-European	1,034	2.10%	7.84%
Korean	95	0.19%	0.72%
Chinese (Incl. Mandarin, Cantonese)	160	0.32%	1.21%
Vietnamese	228	0.46%	1.73%
Tagalog (incl. Filipino)	71	0.14%	0.54%
Other Asian and Pacific Island languages	446	0.90%	3.38%
Arabic	615	1.25%	4.66%
Other and Unspecified	828	1.68%	6.28%
<b>Total LEP Population</b>	<b>13,193</b>	<b>26.76%</b>	
<b>Total Population</b>	<b>49,304</b>		

Hopewell City			
Language	Number of LEP Individuals (5+)	Percent of State Population	Percent of LEP Population
Spanish	866	4.05%	72.41%
French, Haitian, or Cajun	31	0.14%	2.59%
German or other West Germanic languages	65	0.30%	5.43%
Russian, Polish, or other Slavic languages	0	0.00%	0.00%
Other Indo-European	46	0.21%	3.85%
Korean	0	0.00%	0.00%
Chinese (Incl. Mandarin, Cantonese)	0	0.00%	0.00%
Vietnamese	26	0.12%	2.17%
Tagalog (incl. Filipino)	126	0.59%	10.54%
Other Asian and Pacific Island languages	0	0.00%	0.00%
Arabic	0	0.00%	0.00%
Other and Unspecified	36	0.17%	3.01%
<b>Total LEP Population</b>	<b>1,196</b>	<b>5.59%</b>	
<b>Total Population</b>	<b>21,397</b>		

Lexington City			
Language	Number of LEP Individuals (5+)	Percent of State Population	Percent of LEP Population
Spanish	277	3.88%	47.76%
French, Haitian, or Cajun	36	0.50%	6.21%
German or other West Germanic languages	0	0.00%	0.00%
Russian, Polish, or other Slavic languages	29	0.41%	5.00%
Other Indo-European	60	0.84%	10.34%
Korean	0	0.00%	0.00%
Chinese (Incl. Mandarin, Cantonese)	103	1.44%	17.76%
Vietnamese	0	0.00%	0.00%
Tagalog (incl. Filipino)	0	0.00%	0.00%
Other Asian and Pacific Island languages	75	1.05%	12.93%
Arabic	0	0.00%	0.00%
Other and Unspecified	0	0.00%	0.00%
<b>Total LEP Population</b>	<b>580</b>	<b>8.13%</b>	
<b>Total Population</b>	<b>7,138</b>		

Lynchburg City			
Language	Number of LEP Individuals (5+)	Percent of State Population	Percent of LEP Population
Spanish	2,024	2.72%	39.60%
French, Haitian, or Cajun	160	0.21%	3.13%
German or other West Germanic languages	204	0.27%	3.99%
Russian, Polish, or other Slavic languages	57	0.08%	1.12%
Other Indo-European	677	0.91%	13.25%
Korean	285	0.38%	5.58%
Chinese (Incl. Mandarin, Cantonese)	377	0.51%	7.38%
Vietnamese	240	0.32%	4.70%
Tagalog (incl. Filipino)	41	0.06%	0.80%
Other Asian and Pacific Island languages	363	0.49%	7.10%
Arabic	90	0.12%	1.76%
Other and Unspecified	593	0.80%	11.60%
<b>Total LEP Population</b>	<b>5,111</b>	<b>6.86%</b>	
<b>Total Population</b>	<b>74,531</b>		

Manassas City			
Language	Number of LEP Individuals (5+)	Percent of State Population	Percent of LEP Population
Spanish	13,241	33.67%	79.57%
French, Haitian, or Cajun	265	0.67%	1.59%
German or other West Germanic languages	128	0.33%	0.77%
Russian, Polish, or other Slavic languages	237	0.60%	1.42%
Other Indo-European	692	1.76%	4.16%
Korean	183	0.47%	1.10%
Chinese (Incl. Mandarin, Cantonese)	26	0.07%	0.16%
Vietnamese	225	0.57%	1.35%
Tagalog (incl. Filipino)	406	1.03%	2.44%
Other Asian and Pacific Island languages	624	1.59%	3.75%
Arabic	195	0.50%	1.17%
Other and Unspecified	418	1.06%	2.51%
<b>Total LEP Population</b>	<b>16,640</b>	<b>42.31%</b>	
<b>Total Population</b>	<b>39,331</b>		

Manassas Park City			
Language	Number of LEP Individuals (5+)	Percent of State Population	Percent of LEP Population
Spanish	5,655	35.46%	68.30%
French, Haitian, or Cajun	135	0.85%	1.63%
German or other West Germanic languages	0	0.00%	0.00%
Russian, Polish, or other Slavic languages	18	0.11%	0.22%
Other Indo-European	1,421	8.91%	17.16%
Korean	74	0.46%	0.89%
Chinese (Incl. Mandarin, Cantonese)	13	0.08%	0.16%
Vietnamese	631	3.96%	7.62%
Tagalog (incl. Filipino)	57	0.36%	0.69%
Other Asian and Pacific Island languages	90	0.56%	1.09%
Arabic	60	0.38%	0.72%
Other and Unspecified	126	0.79%	1.52%
<b>Total LEP Population</b>	<b>8,280</b>	<b>51.93%</b>	
<b>Total Population</b>	<b>15,946</b>		

Martinsville City			
Language	Number of LEP Individuals (5+)	Percent of State Population	Percent of LEP Population
Spanish	821	6.52%	71.77%
French, Haitian, or Cajun	127	1.01%	11.10%
German or other West Germanic languages	35	0.28%	3.06%
Russian, Polish, or other Slavic languages	16	0.13%	1.40%
Other Indo-European	0	0.00%	0.00%
Korean	0	0.00%	0.00%
Chinese (Incl. Mandarin, Cantonese)	0	0.00%	0.00%
Vietnamese	0	0.00%	0.00%
Tagalog (incl. Filipino)	0	0.00%	0.00%
Other Asian and Pacific Island languages	85	0.68%	7.43%
Arabic	0	0.00%	0.00%
Other and Unspecified	60	0.48%	5.24%
<b>Total LEP Population</b>	<b>1,144</b>	<b>9.09%</b>	
<b>Total Population</b>	<b>12,590</b>		

Newport News City			
Language	Number of LEP Individuals (5+)	Percent of State Population	Percent of LEP Population
Spanish	10,159	5.90%	55.79%
French, Haitian, or Cajun	715	0.42%	3.93%
German or other West Germanic languages	898	0.52%	4.93%
Russian, Polish, or other Slavic languages	522	0.30%	2.87%
Other Indo-European	1,289	0.75%	7.08%
Korean	911	0.53%	5.00%
Chinese (Incl. Mandarin, Cantonese)	210	0.12%	1.15%
Vietnamese	608	0.35%	3.34%
Tagalog (incl. Filipino)	744	0.43%	4.09%
Other Asian and Pacific Island languages	1,072	0.62%	5.89%
Arabic	456	0.27%	2.50%
Other and Unspecified	626	0.36%	3.44%
<b>Total LEP Population</b>	<b>18,210</b>	<b>10.58%</b>	
<b>Total Population</b>	<b>172,057</b>		

Norfolk City			
Language	Number of LEP Individuals (5+)	Percent of State Population	Percent of LEP Population
Spanish	11,475	5.18%	48.02%
French, Haitian, or Cajun	1,731	0.78%	7.24%
German or other West Germanic languages	612	0.28%	2.56%
Russian, Polish, or other Slavic languages	462	0.21%	1.93%
Other Indo-European	2,072	0.94%	8.67%
Korean	310	0.14%	1.30%
Chinese (Incl. Mandarin, Cantonese)	703	0.32%	2.94%
Vietnamese	447	0.20%	1.87%
Tagalog (incl. Filipino)	3,541	1.60%	14.82%
Other Asian and Pacific Island languages	997	0.45%	4.17%
Arabic	392	0.18%	1.64%
Other and Unspecified	1,156	0.52%	4.84%
<b>Total LEP Population</b>	<b>23,898</b>	<b>10.79%</b>	
<b>Total Population</b>	<b>221,475</b>		

Norton City			
Language	Number of LEP Individuals (5+)	Percent of State Population	Percent of LEP Population
Spanish	0	0.00%	0.00%
French, Haitian, or Cajun	0	0.00%	0.00%
German or other West Germanic languages	15	0.42%	88.24%
Russian, Polish, or other Slavic languages	0	0.00%	0.00%
Other Indo-European	0	0.00%	0.00%
Korean	0	0.00%	0.00%
Chinese (Incl. Mandarin, Cantonese)	2	0.06%	11.76%
Vietnamese	0	0.00%	0.00%
Tagalog (incl. Filipino)	0	0.00%	0.00%
Other Asian and Pacific Island languages	0	0.00%	0.00%
Arabic	0	0.00%	0.00%
Other and Unspecified	0	0.00%	0.00%
<b>Total LEP Population</b>	<b>17</b>	<b>0.48%</b>	
<b>Total Population</b>	<b>3,548</b>		

Petersburg City			
Language	Number of LEP Individuals (5+)	Percent of State Population	Percent of LEP Population
Spanish	1,450	4.71%	67.44%
French, Haitian, or Cajun	31	0.10%	1.44%
German or other West Germanic languages	134	0.44%	6.23%
Russian, Polish, or other Slavic languages	8	0.03%	0.37%
Other Indo-European	104	0.34%	4.84%
Korean	86	0.28%	4.00%
Chinese (Incl. Mandarin, Cantonese)	28	0.09%	1.30%
Vietnamese	33	0.11%	1.53%
Tagalog (incl. Filipino)	0	0.00%	0.00%
Other Asian and Pacific Island languages	72	0.23%	3.35%
Arabic	13	0.04%	0.60%
Other and Unspecified	191	0.62%	8.88%
<b>Total LEP Population</b>	<b>2,150</b>	<b>6.98%</b>	
<b>Total Population</b>	<b>30,797</b>		

Poquoson City			
Language	Number of LEP Individuals (5+)	Percent of State Population	Percent of LEP Population
Spanish	107	0.90%	19.49%
French, Haitian, or Cajun	44	0.37%	8.01%
German or other West Germanic languages	22	0.18%	4.01%
Russian, Polish, or other Slavic languages	59	0.50%	10.75%
Other Indo-European	98	0.82%	17.85%
Korean	47	0.39%	8.56%
Chinese (Incl. Mandarin, Cantonese)	14	0.12%	2.55%
Vietnamese	12	0.10%	2.19%
Tagalog (incl. Filipino)	17	0.14%	3.10%
Other Asian and Pacific Island languages	118	0.99%	21.49%
Arabic	11	0.09%	2.00%
Other and Unspecified	0	0.00%	0.00%
<b>Total LEP Population</b>	<b>549</b>	<b>4.61%</b>	
<b>Total Population</b>	<b>11,900</b>		

Portsmouth City			
Language	Number of LEP Individuals (5+)	Percent of State Population	Percent of LEP Population
Spanish	2,544	2.81%	57.99%
French, Haitian, or Cajun	187	0.21%	4.26%
German or other West Germanic languages	122	0.13%	2.78%
Russian, Polish, or other Slavic languages	29	0.03%	0.66%
Other Indo-European	207	0.23%	4.72%
Korean	56	0.06%	1.28%
Chinese (Incl. Mandarin, Cantonese)	218	0.24%	4.97%
Vietnamese	76	0.08%	1.73%
Tagalog (incl. Filipino)	357	0.39%	8.14%
Other Asian and Pacific Island languages	237	0.26%	5.40%
Arabic	152	0.17%	3.46%
Other and Unspecified	202	0.22%	4.60%
<b>Total LEP Population</b>	<b>4,387</b>	<b>4.85%</b>	
<b>Total Population</b>	<b>90,468</b>		

Radford City			
Language	Number of LEP Individuals (5+)	Percent of State Population	Percent of LEP Population
Spanish	171	1.08%	20.38%
French, Haitian, or Cajun	26	0.16%	3.10%
German or other West Germanic languages	11	0.07%	1.31%
Russian, Polish, or other Slavic languages	12	0.08%	1.43%
Other Indo-European	232	1.47%	27.65%
Korean	8	0.05%	0.95%
Chinese (Incl. Mandarin, Cantonese)	130	0.82%	15.49%
Vietnamese	44	0.28%	5.24%
Tagalog (incl. Filipino)	32	0.20%	3.81%
Other Asian and Pacific Island languages	60	0.38%	7.15%
Arabic	39	0.25%	4.65%
Other and Unspecified	74	0.47%	8.82%
<b>Total LEP Population</b>	<b>839</b>	<b>5.32%</b>	
<b>Total Population</b>	<b>15,772</b>		

Richmond City			
Language	Number of LEP Individuals (5+)	Percent of State Population	Percent of LEP Population
Spanish	13,634	6.36%	62.71%
French, Haitian, or Cajun	1,143	0.53%	5.26%
German or other West Germanic languages	406	0.19%	1.87%
Russian, Polish, or other Slavic languages	405	0.19%	1.86%
Other Indo-European	1,948	0.91%	8.96%
Korean	329	0.15%	1.51%
Chinese (Incl. Mandarin, Cantonese)	777	0.36%	3.57%
Vietnamese	296	0.14%	1.36%
Tagalog (incl. Filipino)	235	0.11%	1.08%
Other Asian and Pacific Island languages	719	0.34%	3.31%
Arabic	701	0.33%	3.22%
Other and Unspecified	1,148	0.54%	5.28%
<b>Total LEP Population</b>	<b>21,741</b>	<b>10.15%</b>	
<b>Total Population</b>	<b>214,263</b>		

Roanoke City			
Language	Number of LEP Individuals (5+)	Percent of State Population	Percent of LEP Population
Spanish	4,824	5.20%	54.52%
French, Haitian, or Cajun	384	0.41%	4.34%
German or other West Germanic languages	367	0.40%	4.15%
Russian, Polish, or other Slavic languages	81	0.09%	0.92%
Other Indo-European	1,354	1.46%	15.30%
Korean	81	0.09%	0.92%
Chinese (Incl. Mandarin, Cantonese)	95	0.10%	1.07%
Vietnamese	416	0.45%	4.70%
Tagalog (incl. Filipino)	180	0.19%	2.03%
Other Asian and Pacific Island languages	586	0.63%	6.62%
Arabic	179	0.19%	2.02%
Other and Unspecified	301	0.32%	3.40%
<b>Total LEP Population</b>	<b>8,848</b>	<b>9.53%</b>	
<b>Total Population</b>	<b>92,836</b>		

Salem City			
Language	Number of LEP Individuals (5+)	Percent of State Population	Percent of LEP Population
Spanish	495	2.03%	41.32%
French, Haitian, or Cajun	44	0.18%	3.67%
German or other West Germanic languages	151	0.62%	12.60%
Russian, Polish, or other Slavic languages	132	0.54%	11.02%
Other Indo-European	149	0.61%	12.44%
Korean	4	0.02%	0.33%
Chinese (Incl. Mandarin, Cantonese)	64	0.26%	5.34%
Vietnamese	4	0.02%	0.33%
Tagalog (incl. Filipino)	73	0.30%	6.09%
Other Asian and Pacific Island languages	0	0.00%	0.00%
Arabic	62	0.25%	5.18%
Other and Unspecified	20	0.08%	1.67%
<b>Total LEP Population</b>	<b>1,198</b>	<b>4.92%</b>	
<b>Total Population</b>	<b>24,360</b>		

Staunton City			
Language	Number of LEP Individuals (5+)	Percent of State Population	Percent of LEP Population
Spanish	668	2.77%	44.89%
French, Haitian, or Cajun	57	0.24%	3.83%
German or other West Germanic languages	144	0.60%	9.68%
Russian, Polish, or other Slavic languages	35	0.15%	2.35%
Other Indo-European	186	0.77%	12.50%
Korean	127	0.53%	8.53%
Chinese (Incl. Mandarin, Cantonese)	26	0.11%	1.75%
Vietnamese	0	0.00%	0.00%
Tagalog (incl. Filipino)	10	0.04%	0.67%
Other Asian and Pacific Island languages	158	0.66%	10.62%
Arabic	6	0.02%	0.40%
Other and Unspecified	71	0.29%	4.77%
<b>Total LEP Population</b>	<b>1,488</b>	<b>6.18%</b>	
<b>Total Population</b>	<b>24,082</b>		

Suffolk City			
Language	Number of LEP Individuals (5+)	Percent of State Population	Percent of LEP Population
Spanish	2,491	2.80%	49.62%
French, Haitian, or Cajun	340	0.38%	6.77%
German or other West Germanic languages	392	0.44%	7.81%
Russian, Polish, or other Slavic languages	83	0.09%	1.65%
Other Indo-European	552	0.62%	11.00%
Korean	80	0.09%	1.59%
Chinese (Incl. Mandarin, Cantonese)	24	0.03%	0.48%
Vietnamese	246	0.28%	4.90%
Tagalog (incl. Filipino)	355	0.40%	7.07%
Other Asian and Pacific Island languages	191	0.21%	3.80%
Arabic	55	0.06%	1.10%
Other and Unspecified	211	0.24%	4.20%
<b>Total LEP Population</b>	<b>5,020</b>	<b>5.65%</b>	
<b>Total Population</b>	<b>88,860</b>		

Virginia Beach City			
Language	Number of LEP Individuals (5+)	Percent of State Population	Percent of LEP Population
Spanish	19,849	4.61%	37.76%
French, Haitian, or Cajun	1,688	0.39%	3.21%
German or other West Germanic languages	1,306	0.30%	2.48%
Russian, Polish, or other Slavic languages	1,386	0.32%	2.64%
Other Indo-European	4,868	1.13%	9.26%
Korean	736	0.17%	1.40%
Chinese (Incl. Mandarin, Cantonese)	2,646	0.61%	5.03%
Vietnamese	2,120	0.49%	4.03%
Tagalog (incl. Filipino)	12,084	2.81%	22.99%
Other Asian and Pacific Island languages	3,616	0.84%	6.88%
Arabic	771	0.18%	1.47%
Other and Unspecified	1,502	0.35%	2.86%
<b>Total LEP Population</b>	<b>52,572</b>	<b>12.22%</b>	
<b>Total Population</b>	<b>430,321</b>		

Waynesboro City			
Language	Number of LEP Individuals (5+)	Percent of State Population	Percent of LEP Population
Spanish	1,387	6.62%	77.62%
French, Haitian, or Cajun	16	0.08%	0.90%
German or other West Germanic languages	0	0.00%	0.00%
Russian, Polish, or other Slavic languages	18	0.09%	1.01%
Other Indo-European	47	0.22%	2.63%
Korean	0	0.00%	0.00%
Chinese (Incl. Mandarin, Cantonese)	4	0.02%	0.22%
Vietnamese	288	1.38%	16.12%
Tagalog (incl. Filipino)	5	0.02%	0.28%
Other Asian and Pacific Island languages	0	0.00%	0.00%
Arabic	0	0.00%	0.00%
Other and Unspecified	22	0.11%	1.23%
<b>Total LEP Population</b>	<b>1,787</b>	<b>8.54%</b>	
<b>Total Population</b>	<b>20,936</b>		

Williamsburg City			
Language	Number of LEP Individuals (5+)	Percent of State Population	Percent of LEP Population
Spanish	640	4.23%	29.28%
French, Haitian, or Cajun	192	1.27%	8.78%
German or other West Germanic languages	60	0.40%	2.74%
Russian, Polish, or other Slavic languages	76	0.50%	3.48%
Other Indo-European	361	2.39%	16.51%
Korean	111	0.73%	5.08%
Chinese (Incl. Mandarin, Cantonese)	297	1.96%	13.59%
Vietnamese	60	0.40%	2.74%
Tagalog (incl. Filipino)	31	0.20%	1.42%
Other Asian and Pacific Island languages	108	0.71%	4.94%
Arabic	99	0.65%	4.53%
Other and Unspecified	151	1.00%	6.91%
<b>Total LEP Population</b>	<b>2,186</b>	<b>14.44%</b>	
<b>Total Population</b>	<b>15,136</b>		

Winchester City			
Language	Number of LEP Individuals (5+)	Percent of State Population	Percent of LEP Population
Spanish	4,128	15.61%	79.07%
French, Haitian, or Cajun	345	1.30%	6.61%
German or other West Germanic languages	36	0.14%	0.69%
Russian, Polish, or other Slavic languages	149	0.56%	2.85%
Other Indo-European	272	1.03%	5.21%
Korean	0	0.00%	0.00%
Chinese (Incl. Mandarin, Cantonese)	28	0.11%	0.54%
Vietnamese	69	0.26%	1.32%
Tagalog (incl. Filipino)	7	0.03%	0.13%
Other Asian and Pacific Island languages	39	0.15%	0.75%
Arabic	6	0.02%	0.11%
Other and Unspecified	142	0.54%	2.72%
<b>Total LEP Population</b>	<b>5,221</b>	<b>0.14%</b>	
<b>Total Population</b>	<b>26,449</b>		

# Appendix B: Public Sign-In Sheet/Survey

Title VI of the Civil Rights Act of 1964 requires DRPT to gather statistical data on participants and beneficiaries of the agency’s federal aid highway programs and activities. DRPT collects information on race, color, national origin and gender of the attendees to this public meeting to ensure the inclusion of all segments of the population affected by a proposed project.

DRPT wishes to clarify that this information gathering process is completely voluntary and that you are not required to disclose the statistical data requested in order to participate in this meeting.

The completed forms will be held on file in DRPT’s offices. For further information regarding this process, please contact the Title VI Coordinator by phone at 804.786.4440 or email at [drptpr@drpt.virginia.gov](mailto:drptpr@drpt.virginia.gov).

Please respond to the following questions:

Project Name	Date
Meeting Location	
Name (please print)	Gender <input type="checkbox"/> Male <input type="checkbox"/> Female
General ethnic identification categories (check one): <input type="checkbox"/> Caucasian <input type="checkbox"/> Hispanic American <input type="checkbox"/> American Indian/Alaskan Native <input type="checkbox"/> African American <input type="checkbox"/> Asian/Pacific Islander <input type="checkbox"/> Other _____	
Language Spoken at Home	National Origin

After you complete this form, please fold it and place it inside the designated box on the registration table.

Thank you for your cooperation!